



**The 31<sup>th</sup>**  
National Conference of the  
**Romanian Society**  
of Hematology

[www.srh-events.ro](http://www.srh-events.ro)

**October 1-5, 2025**

Palace of the Parliament  
**Bucharest**

ORGANIZER: **SRH**

*in partnership with*

Balkan Myeloma Study Group

**Program**



# TABLE OF CONTENTS

<b>Welcome message</b>	<b>2</b>
<b>Committees</b>	<b>3</b>
<b>Partners</b>	<b>4</b>
<b>General Information</b>	<b>11</b>
<b>Program at a glance</b>	<b>19</b>
<b>Detailed Scientific Program</b>	
<i><b>Wednesday, October 1<sup>st</sup></b></i>	<b>24</b>
<i><b>Thursday, October 2<sup>nd</sup></b></i>	<b>27</b>
<i><b>Friday, October 3<sup>rd</sup></b></i>	<b>35</b>
<i><b>Saturday, October 4<sup>th</sup></b></i>	<b>61</b>

The 31<sup>th</sup>  
National Conference of the  
**Romanian Society  
of Hematology**

[www.srh-events.ro](http://www.srh-events.ro)

October 1-5, 2025  
Palace of the Parliament  
Bucharest



Dear colleagues, distinguished guests,

It is a great pleasure to warmly welcome you to the **31<sup>st</sup> National Conference of the Romanian Society of Hematology**, taking place between October 1-5, 2025, in the prestigious setting of the Palace of Parliament in Bucharest.

This year's edition enjoys a special collaboration with the Balkan Myeloma Study Group, under the coordination of Professor Meletios A. Dimopoulos, thereby strengthening academic and professional partnerships in the region. The central theme – Multiple Myeloma and Monoclonal Gammopathies – will be addressed from multiple perspectives: from the latest advances in fundamental research to the most effective treatment models and clinical practice.

The SRH 2025 Conference is more than a scientific gathering – it is a shared commitment to excellence, regional collaboration, and the future of hematology. We encourage you to be an integral part of this endeavor and to actively contribute to the debates and sessions that will define the standards of tomorrow.

With friendship and highest consideration,

**Prof. Meletios A. Dimopoulos**

Co-chair of RSH Conference 2025

**Prof. Dr. Daniel Coriu**

Co-chair of RSH Conference 2025



The 31<sup>th</sup>  
National Conference of the  
**Romanian Society  
of Hematology**

**October 1-5, 2025**  
Palace of the Parliament  
**Bucharest**

[www.srh-events.ro](http://www.srh-events.ro)

## COMMITTEES

### PRESIDENTS OF THE CONFERENCE

Meletios Athanassios DIMOPOULOS

Daniel CORIU

### SCIENTIFIC COMMITTEE

Efstathios KASTRITIS

Sorina BĂDELIȚĂ

Jelena BILA

Gabriel GHIAUR

Andrei COLIȚĂ

Anca BOJAN

Cătălin DĂNĂILĂ

Ioana IONIȚĂ

Horia BUMBEA

Carmen SAGUNA

Mihaela ANDREESCU

### ORGANIZING COMMITTEE

Daniel CORIU

Meletios Athanassios DIMOPOULOS

Sorina BĂDELIȚĂ





The 31<sup>th</sup>  
National Conference of the  
**Romanian Society  
of Hematology**

[www.srh-events.ro](http://www.srh-events.ro)

October 1-5, 2025  
Palace of the Parliament  
Bucharest



*The Romanian Society of Hematology thanks the following partners for their support in organizing the event:*

AstraZeneca 

Johnson & Johnson

 NOVARTIS

abbvie

 sobi  
rare strength

 Roche

AMGEN

 Takeda

 astellas

 GENESIS  
pharma



The 31<sup>th</sup>  
National Conference of the  
**Romanian Society  
of Hematology**

**October 1-5, 2025**  
Palace of the Parliament  
**Bucharest**

[www.srh-events.ro](http://www.srh-events.ro)

*The Romanian Society of Hematology thanks the following partners for their support in organizing the event:*



Grindex





The 31<sup>th</sup>  
National Conference of the  
**Romanian Society  
of Hematology**

[www.srh-events.ro](http://www.srh-events.ro)

October 1-5, 2025  
Palace of the Parliament  
Bucharest



*The Romanian Society of Hematology thanks the following partners for their support in organizing the event:*





The 31<sup>th</sup>  
National Conference of the  
**Romanian Society  
of Hematology**

**October 1-5, 2025**  
Palace of the Parliament  
**Bucharest**

[www.srh-events.ro](http://www.srh-events.ro)

*The National Society of Blood Transfusion of Romania thanks the following partners for their support in organizing the event:*





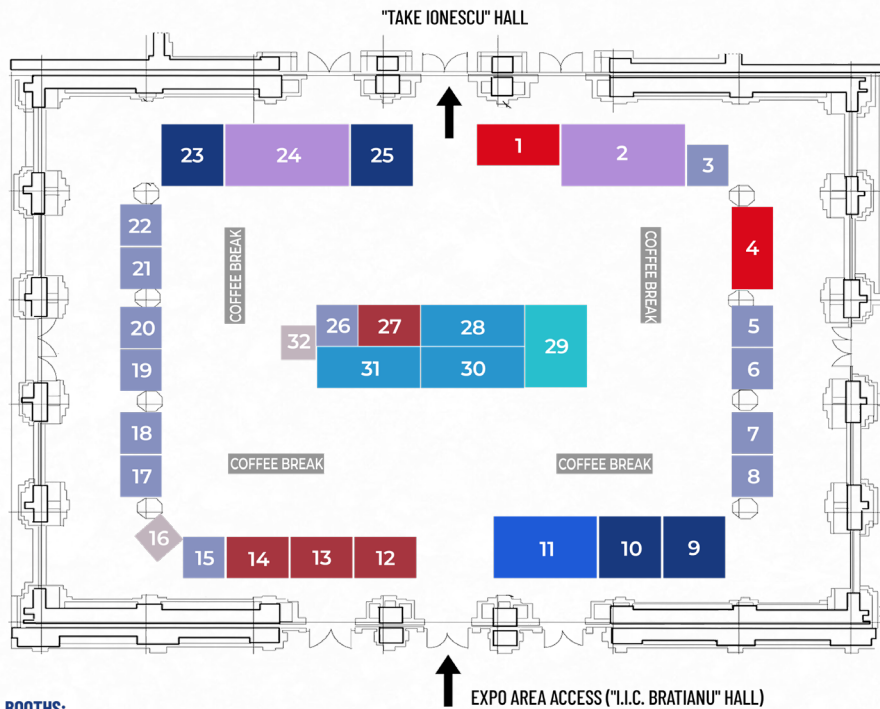
The 31<sup>th</sup>  
National Conference of the  
**Romanian Society  
of Hematology**

www.srh-events.ro

October 1-5, 2025  
Palace of the Parliament  
Bucharest



## EXPO AREA MAP



### BOOTHS:

- |                    |  |                          |
|--------------------|--|--------------------------|
| 1. ASTRAZENECA     | 12. PFIZER   | 22. BRISTOL MYERS SQUIBB |
| 2. ASTRAZENECA     | 13. ACCORD   | 23. ASTELLAS             |
| 3. ZENTIVA         | 14. AOP PHARMA   | 24. JOHNSON & JOHNSON    |
| 4. STADA           | 15. ASOCIAȚIA NAȚIONALĂ A<br>HEMOFILICILOR DIN ROMÂNIA | 25. JOHNSON & JOHNSON    |
| 5. DR.REDDY'S      | 16. PHARMABRANDS                                       | 26. GRINDEKS             |
| 6. SERVIER         | 17. ORMI   | 27. TAKEDA               |
| 7. SWIXX           | 18. SOS MIELOM   | 28. GENESIS              |
| 8. XLAB            | 19. PERSONAL GENETICS                                  | 29. ABBVIE               |
| 9. TOP DIAGNOSTICS | 20. CLINI- LAB   | 30. ROCHE                |
| 10. AMGEN          | 21. MEDIST   | 31. SOBI                 |
| 11. NOVARTIS       |  | 32. ANGELINI             |

The logo consists of the letters 'SRH' in a bold, red, sans-serif font, followed by the year '2025' in a smaller, white, sans-serif font. A vertical red line is positioned to the left of the text.

**SRH** 2025

# General Information







The 31<sup>th</sup>  
National Conference of the  
**Romanian Society  
of Hematology**

[www.srh-events.ro](http://www.srh-events.ro)

**October 1-5, 2025**

Palace of the Parliament  
**Bucharest**



The 31<sup>th</sup>  
National Conference of the  
**Romanian Society  
of Hematology**

**October 1-5, 2025**  
Palace of the Parliament  
**Bucharest**

[www.srh-events.ro](http://www.srh-events.ro)

## GENERAL INFORMATION

**ORGANIZER:** Romanian Society of Hematology

**PARTNER:** Balkan Myeloma Study Group



Balkan Myeloma Study Group

### VENUES

Palace of the Parliament, Bucharest  
Hotel Hilton Garden Inn Old Town

### OFFICIAL WEBSITE

[www.srh-events.ro](http://www.srh-events.ro)

### OFFICIAL LANGUAGES

Romanian and English

### EVENT MANAGEMENT



Anastasiu Panu Street, no. 13, Iași, Romania

Tel: +40.332.40.88.04/05

Web: [www.eventer.ro](http://www.eventer.ro)



**SRH**  
2025



The 31<sup>th</sup>  
National Conference of the  
**Romanian Society  
of Hematology**

[www.srh-events.ro](http://www.srh-events.ro)

**October 1-5, 2025**  
Palace of the Parliament  
**Bucharest**

SRH

  
Balkan Myeloma Study Group

## CONFERENCE SECRETARIAT

The Conference Secretariat, located at the C1 entrance of the Palace of the Parliament, will be opened throughout the event according to the following program:

Thursday, October 2<sup>nd</sup> - 08:30 - 18:30 (12:15-12:45 - lunch break)

Friday, October 3<sup>rd</sup> - 08:00 - 18:30 (13:15-13:45 - lunch break)

Saturday, October 4<sup>th</sup> - 08:00 - 18:30 (13:15-13:45 - lunch break)

You will be asked to scan your badge at the conference Secretariat.

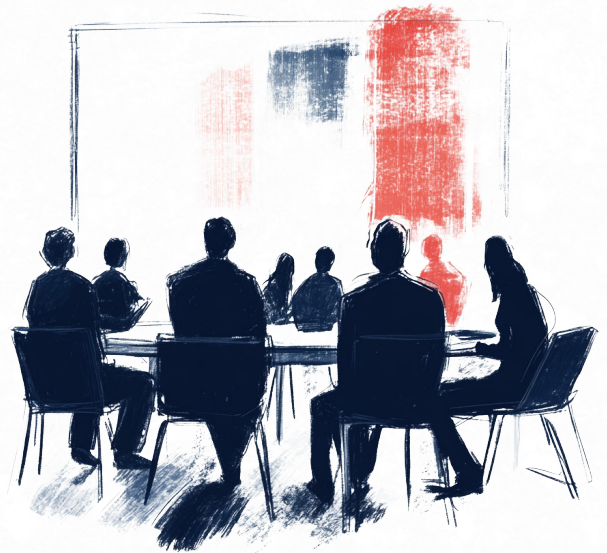
## CONFERENCE KITS

The conference materials will be handed at the Conference Secretariat.

## BADGES

Badges are issued for all participants registered at the conference and for companies' representatives. Access to the conference halls, the medical exhibition and any area related to the conference will be granted by the badge issued at the Secretariat.

**IMPORTANT:** *After validation at the event secretariat, access to the conference halls will only be permitted following a security check carried out by the staff of the Palace of the Parliament. Please note that the security system is similar to those encountered at airports. It is very important to always carry an identity document with you, in case you are subject to additional security checks. Please also note that it is NOT permitted to carry spray devices or any objects that may raise suspicions at the security checkpoints (any item that could be considered a weapon).*





## CERTIFICATES OF ATTENDANCE

The Certificates of Attendance will be sent by email in maximum 30 days post-event. You will receive the Certificate on the email address you used for registration.

The Romanian College of Physicians accredited the 31<sup>st</sup> Conference of the Romanian Society of Hematology with **22 CME** credits, and the pre-conference course *Challenges in Understanding and Interpreting Cytogenetic Analyses and NGS in a Clinical Context* with **4 CME** credits.

The Order of Biochemists, Biologists, and Chemists in the Romanian Healthcare System accredited the 31<sup>st</sup> Conference of the Romanian Society of Hematology with **27 CME** credits.

## SCIENTIFIC SECRETARIAT

The Scientific Secretariat will be opened within the Conference Secretariat. This is where all the scientific presentations will be checked to ensure no technical issues will occur during the presentation of your paper.

## ORAL PRESENTATIONS

Your presentation file must be delivered to the Scientific Secretariat of the conference. You can also send the presentation file by email at [contact@srh-events.ro](mailto:contact@srh-events.ro) one day before, clearly mentioning the title of the presentation, the name of the session, the day and time of the presentation.

We strongly request the authors to respect the time allocated to the paper in the program, otherwise the moderator will have to interrupt the presentation. The remaining time will be displayed on the screen, so you can organize your presentation as best as possible.

The jury will choose the best 3 presentations which will be granted with the participation to the EHA Congress 2026. Authors have the obligation to publish the paper *in extenso* in *Documenta Haematologica – Romanian Journal of Hematology*.



The 31<sup>th</sup>  
National Conference of the  
**Romanian Society  
of Hematology**

[www.srh-events.ro](http://www.srh-events.ro)

October 1-5, 2025  
Palace of the Parliament  
Bucharest



## E-POSTERS

The e-Posters will run on multimedia screens for the entire duration of the conference. The presentation of the e-Posters will take place in two sessions: Friday, October 3<sup>rd</sup>, in “Nicolae Iorga” Hall, 18:00 to 19:00 and Saturday, October 4<sup>th</sup>, in “Nicolae Iorga” Hall, 17:15 to 19:00.

The jury will choose the best 3 e-Posters, which will be granted with the participation to the SRH Congress 2026. Authors have the obligation to publish the paper *in extenso* in *Documenta Haematologica – Romanian Journal of Hematology*.

## PRE-CONFERENCE COURSE

The pre-conference course “Challenges in Understanding and Interpreting Cytogenetic Analyses and NGS in a Clinical Context” will be held on October 1<sup>st</sup>, at Hotel Hilton Garden Inn Old Town.

## CONFERENCE HALLS

The scientific sessions will be held in the conference halls of the Palace of the Parliament: „Take Ionescu”, “Nicolae Iorga”, “Nicolae Balcescu” and “Human Rights”.

## MEDICAL EXHIBITION

The medical exhibition will be open during the entire duration of the conference in “I.I.C. Brătianu” Hall, Palace of the Parliament.



### **OPENING CEREMONY & WELCOME COCKTAIL**

The Opening Ceremony will be held on Thursday, October 2<sup>nd</sup>, 18:15, in "Take Ionescu" Hall and will be followed by the Welcome Cocktail, which will take place in "Unirii" Hall of the Palace of the Parliament. Access will be granted by the invitation received at the Secretariat, based on the already filled-in form.

### **DINNERS**

The dinners are offered by the organizers in the restaurant of Hotel Hilton Garden Inn Old Town as follows:

October 1<sup>st</sup> - 19:45 (*only for the course participants*)

October 3<sup>rd</sup> - 20:00

October 4<sup>th</sup> - 19:30

Access will be granted by the invitation received at the Secretariat, based on the already filled-in form.

### **COFFEE BREAKS**

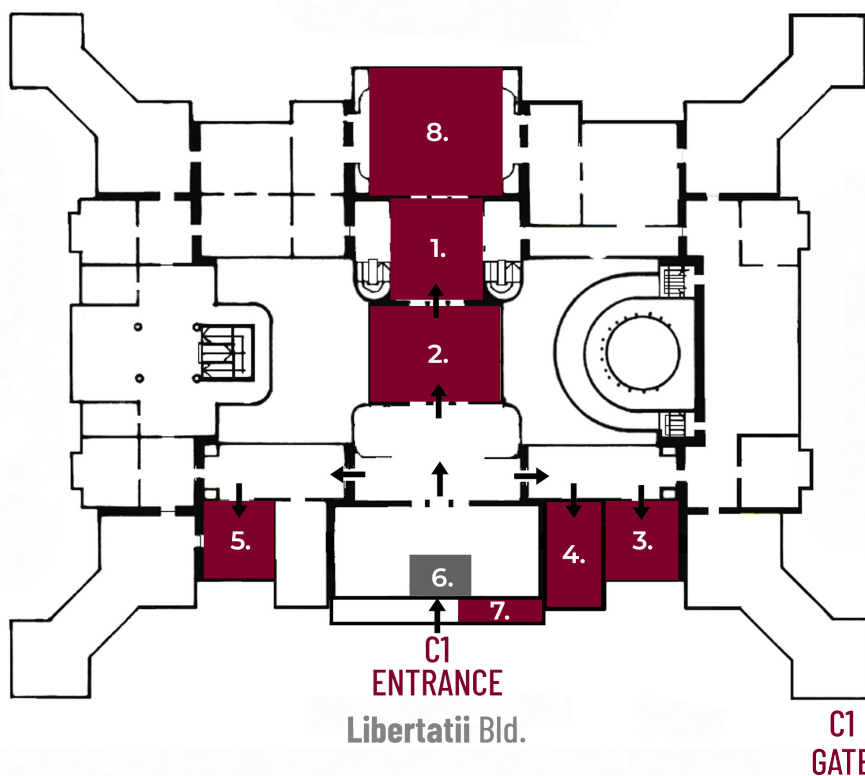
The coffee breaks are offered in the designated areas within the medical exhibition, as specified in the program.

### **LUNCHES**

Lunch boxes will be provided for the participants in the Coffee Break areas on October 2<sup>nd</sup>, 3<sup>rd</sup> and 4<sup>th</sup>, based on the lunch tickets received in the same day at the Conference Secretariat, based on the already filled-in form.



## CONFERENCE VENUE MAP



- |                            |                              |
|----------------------------|------------------------------|
| 1. "TAKE IONESCU" Hall     | 5. "HUMAN RIGHTS" Hall       |
| 2. "I.I.C. BRĂȚIANU" Hall  | 6. SECURITY CHECKPOINT (SPP) |
| 3. "NICOLAE IORGA" Hall    | 7. CONFERENCE SECRETARIAT    |
| 4. "NICOLAE BĂLCESCU" Hall | 8. "UNIRII" Hall             |

The image features a large, ornate, multi-story building with many windows and classical architectural details, set against a dark blue background. In the foreground, there is a decorative fence with stone pillars and a patterned metal railing. The text 'SRH 2025' is positioned in the upper left, with 'SRH' in red and '2025' in white. Below it, the word 'Program' is written in a large, bold, white sans-serif font, and 'at a glance' is written in a smaller, italicized white sans-serif font. A vertical red line is located to the left of the text.

**SRH** 2025

# Program

*at a glance*





The 31<sup>th</sup>  
National Conference of the  
**Romanian Society  
of Hematology**

[www.srh-events.ro](http://www.srh-events.ro)

**October 1-5, 2025**

Palace of the Parliament  
**Bucharest**



## WEDNESDAY, OCTOBER 1<sup>ST</sup>

### Hotel HILTON GARDEN INN OLD TOWN

15:00 - 16:30

#### PRE-CONFERENCE COURSE (1<sup>st</sup> part)

**Challenges in Understanding and Interpreting Cytogenetic Analyses and NGS in a Clinical Context**

16:30 - 16:45 Coffee Break

16:45 - 19:30

#### PRE-CONFERENCE COURSE (2<sup>nd</sup> part)

**Challenges in Understanding and Interpreting Cytogenetic Analyses and NGS in a Clinical Context**



The 31<sup>th</sup>  
National Conference of the  
**Romanian Society  
of Hematology**

[www.srh-events.ro](http://www.srh-events.ro)

**October 1-5, 2025**  
Palace of the Parliament  
**Bucharest**



## THURSDAY, OCTOBER 2<sup>ND</sup>

### TAKE IONESCU HALL (PALACE OF THE PARLIAMENT)

09:00 - 10:40

**JOINT SESSION EHA - RSH: ACUTE LYMPHOBLASTIC LEUKEMIA IN ADOLESCENTS AND YOUNG ADULTS (AYA)**

10:40 - 11:00 Coffee Break

11:00 - 12:00

**Launching of the guide "Vaccination of Adults with Hematologic Malignancies" & Scientific session**

12:00 - 13:00 Lunch break

13:00 - 13:15

**Welcome by the Conference Co-Chairs**

*Prof. Dr. Meletios Athanassios Dimopoulos, Prof. Dr. Daniel Coriu*

13:15 - 15:15

**NOVEL APPROACHES FOR DISEASE AND RESPONSE ASSESSMENT**

15:15 - 15:30 Coffee Break

15:30 - 18:00

**SESSION: HOW DO I TREAT?**

18:15

**OFFICIAL OPENING CEREMONY**



The 31<sup>th</sup>  
National Conference of the  
**Romanian Society  
of Hematology**

[www.srh-events.ro](http://www.srh-events.ro)

**October 1-5, 2025**  
Palace of the Parliament  
**Bucharest**

## FRIDAY, OCTOBER 3<sup>RD</sup>

<b>TAKE IONESCU HALL</b> (PALACE OF THE PARLIAMENT)	<b>NICOLAE IORGA HALL</b> (PALACE OF THE PARLIAMENT)	<b>HUMAN RIGHTS HALL</b> (PALACE OF THE PARLIAMENT)
09:00 – 10:30 <b>Managing Major Complications in Multiple Myeloma</b>	09:00 – 10:40 <b>Company Symposia (1)</b>	08:30 – 09:00 <b>Management, Strategy, Organization</b>  09:00 – 10:45 <b>Donation / Donors</b>
10:30 – 10:45 Coffee Break	10:40 – 11:00 Coffee Break	10:45 – 11:00 Coffee Break
10:45 – 13:05 <b>Other Plasma Cell Disorders (I)</b>	11:00 – 13:15 <b>Company Symposia (2)</b>	11:00 – 13:00 <b>In Memoriam: dr. Florentina Vlădăreanu - Past President of the National Blood Transfusion Society of Romania</b>
13:05 – 14:00 Lunch break	13:15 – 14:00 Lunch	13:00 – 14:00 Lunch
14:00 – 15:20 <b>Other Plasma Cell Disorders (II)</b>	14:00 – 16:15 <b>Company Symposia (3)</b>	14:00 – 15:45 <b>Biological Control I</b>
15:20 – 15:35 Coffee Break	16:15 – 16:30 Coffee Break	15:45 – 16:00 Coffee break
15:35 – 18:35 <b>Joint Session BMSG - RSH</b>	16:30 – 18:00 <b>Company Symposia (4)</b>	16:00 – 17:15 <b>Biological Control II</b>
18:45 – 19:30 <b>General Assembly of Romanian Society of Hematology</b>	18:00 – 19:00 <b>e-Posters Session (1)</b>	17:15 – 18:15 <b>General Assembly of The National Society of Blood Transfusion</b>



## SATURDAY, OCTOBER 4<sup>TH</sup>

<b>TAKE IONESCU HALL</b> (PALACE OF THE PARLIAMENT)	<b>NICOLAE IORGA HALL</b> (PALACE OF THE PARLIAMENT)	<b>NICOLAE BALCESCU HALL</b> (PALACE OF THE PARLIAMENT)	<b>HUMAN RIGHTS HALL</b> (PALACE OF THE PARLIAMENT)
08:30 - 10:30 <b>Acute Leukemias and Myelodysplastic Syndrome</b>	09:00 - 10:00 <b>Company Symposia (5)</b>	09:30 - 11:05 <b>Company Symposia (8)</b>	08:30 - 10:45 <b>Educational Session I</b>
10:30 - 10:45 Coffee Break	10:00 - 10:20 Coffee Break	11:05 - 11:20 Coffee Break	10:45 - 11:00 Coffee Break
10:45 - 13:00 <b>Chronic Myeloproliferative Syndromes, Rare Diseases &amp; Varia</b>	10:20 - 13:00 <b>Company Symposia (6)</b>	11:20 - 13:05 <b>Company Symposia (9)</b>	11:00 - 13:00 <b>Educational Session II</b>
13:00 - 14:00 Lunch	13:00 - 14:00 Lunch	13:05 - 14:00 Lunch	13:00 - 14:00 Lunch
14:00 - 17:00 <b>Chronic Lymphoproliferative Syndromes</b>	14:00 - 17:00 <b>Company Symposia (7)</b>	14:00 - 16:00 <b>Company Symposia (10)</b>	14:00 - 15:00 <b>Biological Control III</b> 15:00 - 16:00 <b>Clinical Transfusion I</b>
17:00 - 17:15 Coffee Break	17:00 - 17:15 Coffee Break	16:00 - 16:15 Coffee break	16:00 - 16:15 Coffee break
17:15 - 18:45 <b>Monoclonal Gammopathies</b>	17:15 - 19:00 <b>e-Posters Session (2)</b>	16:15 - 17:55 <b>Company Symposia (11)</b>	16:15 - 18:15 <b>Clinical Transfusion II</b>

The logo consists of the letters 'SRH' in a bold, red, sans-serif font, with the year '2025' in a smaller, white, sans-serif font positioned to the right of 'SRH'.

**SRH** 2025

The date is displayed in a large, white, sans-serif font. 'Wednesday,' is on the top line, and 'October 1<sup>st</sup>' is on the bottom line.

**Wednesday,**  
*October 1<sup>st</sup>*

The 31<sup>th</sup>  
National Conference of the  
**Romanian Society  
of Hematology**

[www.srh-events.ro](http://www.srh-events.ro)

October 1-5, 2025  
Palace of the Parliament  
Bucharest



Wednesday, October 1<sup>st</sup> | Hotel Hilton Garden Inn Old Town

## **PRE-CONFERENCE COURSE: CHALLENGES IN UNDERSTANDING AND INTERPRETING CYTOGENETIC ANALYSES AND NGS IN A CLINICAL CONTEXT**

Chairperson: Daniel Coriu

15:00 **Structure and Functions of Nucleic Acids**

15:30 Onda-Tabita Călugăru

15:30 **Chromosome Structure and the Cell Cycle**

16:00 Cerasela Jardan

16:00 **ISCN Nomenclature**

16:30 Cerasela Jardan

16:30

16:45 *Coffee break*

16:45 **HGVS Nomenclature**

17:15 Onda-Tabita Călugăru

17:15 **Predisposition Syndromes in Hematologic Neoplasms**

18:00 Cerasela Jardan, Onda-Tabita Călugăru

18:00 **Integration of Diagnostic and Prognostic Markers into Medical Practice**

18:45 Dumitru Jardan

18:45 **Diagnostic and Prognostic Challenges in Hematologic Neoplasms**

19:15 Cerasela Jardan, Onda-Tabita Călugăru

19:15

19:30 **Conclusions**





**SRH** 2025

**Thursday,**  
*October 2<sup>nd</sup>*



# S T A R T

# PUTERNIC



**CALQUENCE**  
acalabrutinib 100 mg comprimate

#### Indicații terapeutice:<sup>1</sup>

- Calquence în monoterapie sau în asociere cu obinutuzumab este indicat pentru tratamentul pacienților adulți cu leucemie limfocitară cronică (LLC) netratată anterior.
- Calquence în asociere cu venetoclax cu sau fără obinutuzumab este indicat pentru tratamentul pacienților adulți cu leucemie limfocitară cronică (LLC) netratată anterior.
- Calquence în monoterapie este indicat pentru tratamentul pacienților adulți cu leucemie limfocitară cronică (LLC) cărora li s-a administrat cel puțin o terapie anterioară.
- Calquence în asociere cu bendamustină și rituximab (BR) este indicat pentru tratamentul pacienților adulți cu limfom cu celule de manta (LCM) netratat anterior și care nu sunt eligibili pentru transplant autolog de celule stem (TACS).
- Calquence în monoterapie este indicat pentru tratamentul pacienților adulți cu limfom cu celule de manta (LCM) recidivat sau refractar netratați anterior cu un inhibitor al tirozin kinazei Bruton (TKB).

1. RCP Calquence în vigoare

Acest material este destinat profesioniștilor din domeniul sănătății.

Medicament eliberat pe bază de prescripție medicală.

Pentru informații suplimentare, vă rugăm să consultați versiunea actualizată a Rezumatului Caracteristicilor Produsului, scanând codul QR.

Evenimentele adverse pot fi raportate online <https://contactazmedical.astrazeneca.com>, sau la adresa [farmacovigilenta@astrazeneca.com](mailto:farmacovigilenta@astrazeneca.com)  
RO-27465/09.2025

**AstraZeneca**

**ASTRAZENECA PHARMA S.R.L.**  
Str. Tipografilor 1A, MUSE Offices, Et. 2 și 3,  
013714, sector 1, București,  
Tel.: +40 21 317 60 41; Email: [office.romania@astrazeneca.com](mailto:office.romania@astrazeneca.com)





The 31<sup>th</sup>  
National Conference of the  
**Romanian Society  
of Hematology**

[www.srh-events.ro](http://www.srh-events.ro)

**October 1-5, 2025**  
Palace of the Parliament  
**Bucharest**

Thursday, October 2<sup>nd</sup> | Palace of the Parliament – Take Ionescu Hall

## **JOINT SESSION EHA – RSH: ACUTE LYMPHOBLASTIC LEUKEMIA IN ADOLESCENTS AND YOUNG ADULTS (AYA)**

Chairpersons: Daniel Coriu, Nicolas Boissel

09:00 **Frontline therapy for Ph-negative ALL in AYA**

09:25 Nicolas Boissel (France)

09:25 **ALL in children and AYA patients-Fundeni Clinical Institute experience**

09:50 Anca Coliță, Andreea Ștefan, Letiția Radu (Romania)

09:50 **Management of Ph+ ALL in AYA, how to achieve cure with minimal toxicities?**

10:15 Gabriel Ghiaur (USA)

10:15 **Evolving Care in Young Adults with Acute Lymphoblastic Leukemia**

10:40 Alexandra Ghiaur (Romania)

10:40

11:00

*Coffee break*



The 31<sup>th</sup>  
National Conference of the  
**Romanian Society  
of Hematology**

[www.srh-events.ro](http://www.srh-events.ro)

October 1-5, 2025  
Palace of the Parliament  
Bucharest



Thursday, October 2<sup>nd</sup> | Palace of the Parliament – Take Ionescu Hall

## **JOINT SESSION EHA – RSH: ACUTE LYMPHOBLASTIC LEUKEMIA IN ADOLESCENTS AND YOUNG ADULTS (AYA)**

Chairperson: Daniel Coriu

11:00 Official Launch of the Guide: **“Vaccination of Adults with Hematologic Malignancies”**

11:15 Victoria Aramă, Lăcrămioara Mohorea, Daniel Coriu

### **Scientific Session Organized with the Support of Sobi**

From Challenge to Control - A new Standard to treating Gram Negative Infections in Immunocompromised Patients

11:15 Moderator: Anca Coliță

12:00 Gram Negative Infections in Immunosuppression: Challenges and Modern Therapeutic Solutions

Victoria Aramă

Multidisciplinary Collaboration in Clinical Practice: Real-Life Case Studies

Lăcrămioara Mohorea, Sorina Bădeliță

12:00

13:00

*Lunch break*

### **13:00 – 13:15 Welcome by the Conference Co-Chairs**

Prof. Dr. Meletios Athanassios Dimopoulos, Prof. Dr. Daniel Coriu

 **DARZALEX<sup>®</sup> SC**  
daratumumab subcutanat

**imbruvic<sup>®</sup>** + **venetoclax**  
(ibrutinib)

 **TECVAYLI<sup>™</sup>**  
(teclistamab)

 **TALVEY<sup>®</sup>**  
(talquetamab)

## Deoarece viața este obiectivul suprem

Pentru informații complete de prescriere, vă rugăm să citiți Rezumatul caracteristicilor produsului Darzalex<sup>®</sup>, scanând codul QR alăturat.



Pentru informații complete de prescriere, vă rugăm să citiți Rezumatul caracteristicilor produsului Imbruvic<sup>®</sup>, scanând codul QR alăturat.



Pentru informații complete de prescriere, vă rugăm să citiți Rezumatul caracteristicilor produsului Tecvayli<sup>™</sup>, scanând codul QR alăturat.



Pentru informații complete de prescriere, vă rugăm să citiți Rezumatul caracteristicilor produsului Talvey<sup>®</sup>, scanând codul QR alăturat.



Acesta este un material destinat exclusiv profesioniștilor din domeniul sănătății.

**Johnson & Johnson**

Johnson & Johnson Romania S.R.L.  
Strada Tipografilor nr. 11-15, Clădirea S-Park, Corpul B3, Etaj 3, Camera 1,  
Corpul B4, Etaj 3 și Corp LB, Etaj 3, Sector 1, 013714 București, România  
Tel. 021 207 18 00, Fax 021 207 18 11  
innovativemedicine.jnj.com/romania/

CP-540926



**SCSEMBLIX®**  
(asciminib) comprimate 20 mg, 40 mg



**Jurnalul medicului  
hematolog**

• Colecție de cazuri clinice •

**Biblioteca de cazuri clinice reale și  
perspective clinice în tratamentul  
leucemiei mieloid cronice.**

Cazuri disponibile  
pe NOVARTIS PRO



**Abrevieri:**  
FC, faza cronică; LMC, leucemia mieloidă cronică; Ph+,  
cromozom Philadelphia pozitiv; TKI, inhibitor de tirozin kinază  
(tyrosine kinase inhibitor).

**Referințe:**  
1. Răa D, et al. Blood. 2021;138(21):2031-2041;  
2. Schoepfer J, et al. J. Med. Chem. 2018;61(18):8120-8135;  
3. Redaelli S, et al. J. Clin. Oncol. 2009;27(3):469-471



Pentru informații complete  
de prescriere, vă rugăm  
să citiți Rezumatul  
Caracteristicilor Produsului  
SCSEMBLIX®, scanând  
codul QR alăturat.

**JAKAVI®**  
ruxolitinib

# POLICITEMIA VERA CU RISC CRESCUT IMPUNE UN NIVEL MAXIM DE ALERTĂ

Numeroși factori (hematocrit, leucocite,  
încărcătura alelei, printre altele)  
pot crește riscul de evenimente tromboembolice  
și pot pune în pericol viața pacienților cu PV.<sup>1-3</sup>

**REDUCEȚI  
RISCU CU**

**JAKAVI®**  
ruxolitinib

**SINGURUL INHIBITOR JAK1/JAK2  
PENTRU TRATAMENTUL PACIENȚILOR CU PV<sup>4</sup>**

**Abrevieri:**

JAK, *Janus kinase* (kinază Janus); PV, policitemia vera.

**Referințe:** 1. Harrison CN, Nangalia J, Boucher R, et al. Ruxolitinib versus best available therapy for polycythemia vera: intolerant or resistant to hydroxycarbamide in a randomized trial. *J Clin Oncol*. 2023 (protocol suppl). Published online May 1, 2023. doi:10.1200/JCO.2023.01935. 2. Marchioli R, Finazzi G, Specchia G, et al. Cardiovascular events and intensity of treatment in polycythemia vera. *N Engl J Med*. 2013;368(1):22-33. 3. Gerds AT, Mesa RA, Burke JM, et al. Association between elevated white blood cell counts and thrombotic events in polycythemia vera: analysis from REVEAL Blood. Published online December 24, 2023. doi:10.1182/blood.2023020232. 4. Rezumatul caracteristicilor produsului JAKAVI®, ultima versiune revizuită.

Pentru informații complete  
de prescriere, vă rugăm  
să citiți Rezumatul  
Caracteristicilor  
Produsului JAKAVI®,  
scanând codul QR alăturat.



▼ Acest medicament face obiectul unei monitorizări suplimentare. Acest lucru va permite identificarea rapidă de noi informații referitoare la siguranță. Profesioniștii din domeniul sănătății sunt rugați să raporteze orice reacții adverse suspectate. Acest material promotional este destinat profesioniștilor din domeniul sănătății. Medicament eliberat pe bază de prescripție medicală restrictivă - PR. Înainte de a prescrie Scemblix, vă rugăm să consultați rezumatul caracteristicilor produsului, disponibil Scemblix, INN-asciminib. Înainte de a prescrie Jakavi, vă rugăm să consultați rezumatul caracteristicilor produsului, disponibil Jakavi, INN-ruxolitinib. Pentru raportarea reacțiilor adverse suspectate, vă puteți adresa către Agenția Națională a Medicamentului și a Dispozitivelor Medicale din România, la [www.anm.ro](http://www.anm.ro), email: [adr@anm.ro](mailto:adr@anm.ro), sau către Novartis Pharma Services Romania S.R.L., la telefon: +40213104430, email: [drugsafety.romania@novartis.com](mailto:drugsafety.romania@novartis.com). Pentru informații suplimentare, vă rugăm să contactați Novartis Pharma Services Romania S.R.L. la telefon +40213129901 sau email [office.romania@novartis.com](mailto:office.romania@novartis.com). Pentru informații complete cu privire la prelucrarea datelor cu caracter personal, vă rugăm să dați click aici.

**NOVARTIS**

Novartis Pharma Services Romania SRL  
Complex Equilibrium, Clădirea 1, Str. Gara  
Herăstrău, Nr. 2, Etaj 10, Secțiunea E10.02,  
Cod 020334, Sector 2, București, România,  
Tel. +40213129901; Email:  
[office.romania@novartis.com](mailto:office.romania@novartis.com)

FA-11508647





The 31<sup>th</sup>  
National Conference of the  
**Romanian Society  
of Hematology**

[www.srh-events.ro](http://www.srh-events.ro)

**October 1-5, 2025**  
Palace of the Parliament  
**Bucharest**

Thursday, October 2<sup>nd</sup> | Palace of the Parliament – Take Ionescu Hall

## **SESSION: NOVEL APPROACHES FOR DISEASE AND RESPONSE ASSESSMENT**

Chairpersons: Nikhil Munshi, Daniel Coriu

13:15 **Clonal diversity**  
13:45 Nizar Bahlis (Canada)

13:45 **Optimizing MRD assessment**  
14:15 Nikhil Munshi (USA)

14:15 **Immune monitoring in the context of immunotherapy**  
14:45 Hermann Einsele (Germany)

14:45 **Advances in imaging techniques**  
15:15 Karthik Ramasamy (United Kingdom)

15:15  
15:30 *Coffee Break*

The 31<sup>th</sup>  
National Conference of the  
**Romanian Society  
of Hematology**

[www.srh-events.ro](http://www.srh-events.ro)

October 1-5, 2025  
Palace of the Parliament  
Bucharest



Thursday, October 2<sup>nd</sup> | Palace of the Parliament – Take Ionescu Hall

## SESSION: HOW DO I TREAT?

Chairpersons: Meletios Athanassios Dimopoulos, Syed Abbas

15:30 **New guidelines and the optimal approach**  
16:00 Meletios Athanassios Dimopoulos (Greece)

16:00 **The optimal approach in very old and frail patients and frailty stratification risk**  
16:30 Jelena Bila (Serbia)

16:30 **The new classification for high-risk disease**  
17:00 Syed Abbas (USA)

17:00 **Management of patients at first relapse**  
17:30 Pieter Sonneveld (Netherlands)

17:30 **Management of patients triple class refractory**  
18:00 Philippe Moreau (France)

18:15 **Official Opening Ceremony & Welcome Cocktail**



**SRH** 2025

**Friday,**  
*October 3<sup>rd</sup>*





Scanați codul QR  
pentru **Rezumatul  
Caracteristicilor  
Produsului  
VENCLYXTO®**



Scanați codul QR  
pentru **Rezumatul  
Caracteristicilor  
Produsului  
TEPKINLY®**



abbvie

ABBVIE S.R.L. Lake View, Strada Barbu Văcărescu nr. 301-311  
etaj 2, sector 2, C.P.020276, București, România  
Tel: +4021 529 3035 / Fax: +4021 529 3031

RO-ONC-240018/ Data creare 09.08.2024

Acest material promoțional este destinat profesioniștilor din domeniul sănătății.

Medicamentele VENCLYXTO® și TEPKINLY® se eliberează pe bază de prescripție medicală restrictivă: PR.

Raportarea evenimentelor adverse suspectate pentru produsele AbbVie se poate face către Agenția Națională a Medicamentului și a Dispozitivelor Medicale din România (ANMDMR), secțiunea Medicamente de uz uman, email: [adr@anm.ro](mailto:adr@anm.ro) sau către AbbVie România SRL, Departamentul Farmacovigilență - Telefon: +40215293429 / E-mail: [ROPV@abbvie.com](mailto:ROPV@abbvie.com).



The 31<sup>th</sup>  
National Conference of the  
**Romanian Society  
of Hematology**

[www.srh-events.ro](http://www.srh-events.ro)

**October 1-5, 2025**  
Palace of the Parliament  
**Bucharest**

Friday, October 3<sup>rd</sup> | Palace of the Parliament – Take Ionescu Hall

## **SESSION: MANAGING MAJOR COMPLICATIONS IN MULTIPLE MYELOMA**

Chairpersons: Sorina Bădeliță, Suzanne Lentzsch

09:00 **Extra-medullary disease and plasma cells leukemia**

09:30 Meletios Athanassios Dimopoulos (Greece)

09:30 **Bone disease: the latest guidelines**

10:00 Suzanne Lentzsch (USA)

10:00 **Vaccinations and infectious prophylaxis**

10:30 Heinz Ludwig (Austria)

10:30

10:45

*Coffee Break*

The 31<sup>th</sup>  
National Conference of the  
**Romanian Society  
of Hematology**

[www.srh-events.ro](http://www.srh-events.ro)

**October 1-5, 2025**  
Palace of the Parliament  
**Bucharest**



Friday, October 3<sup>rd</sup> | Palace of the Parliament – Take Ionescu Hall

## **SESSION: OTHER PLASMA CELL DISORDERS (I)**

Chairpersons: Jelena Bila, Efstathios Kastritis

10:45 **Smoldering myeloma**  
11:05 Efstathios Kastritis (Greece)

11:05 One case report presented by a member of **Serbia**  
11:20 One case report presented by **Romania**

11:20 **Discussions**  
11:25

11:25 **Diagnosis and management of MGUS and MGCS**  
11:45 Meletios Athanassios Dimopoulos (Greece)

11:45 One case report presented by **Slovenia**  
12:00 One case report presented by **Romania**

12:00 **Discussions**  
12:05





The 31<sup>th</sup>  
National Conference of the  
**Romanian Society  
of Hematology**

**October 1-5, 2025**  
Palace of the Parliament  
**Bucharest**

[www.srh-events.ro](http://www.srh-events.ro)

12:05 **Diagnosis and management of AL amyloidosis**  
12:25 Efsthios Kastritis (Greece)

12:25 **Diagnosis and management of TTR amyloidosis**  
12:45 Daniel Coriu (Romania)

12:45 One case report presented by a member of **Albania**  
13:00 One case report presented by **Montenegro**

13:00 **Discussions**  
13:05

13:05 *Lunch break*  
14:00

The 31<sup>th</sup>  
National Conference of the  
**Romanian Society  
of Hematology**

[www.srh-events.ro](http://www.srh-events.ro)

October 1-5, 2025  
Palace of the Parliament  
Bucharest



Friday, October 3<sup>rd</sup> | Palace of the Parliament – Take Ionescu Hall

## SESSION: OTHER PLASMA CELL DISORDERS (II)

Chairpersons: Maria Gavriatopoulou, Oliver Karanfilski

14:00 **Diagnosis and management of Waldenström macroglobulinemia**

14:20 Maria Gavriatopoulou (Greece)

14:20 One case report presented by a member of **BMSG**

14:35 One case report presented by **Romania**

14:35

### Discussions

14:40

14:40 **Diagnosis and management of POEMS Syndrome**

15:00 Daniel Coriu (Romania)

15:00 One case report presented by a member of **BMSG**

15:15 One case report presented by **Romania**

15:15

### Discussions

15:20

15:20

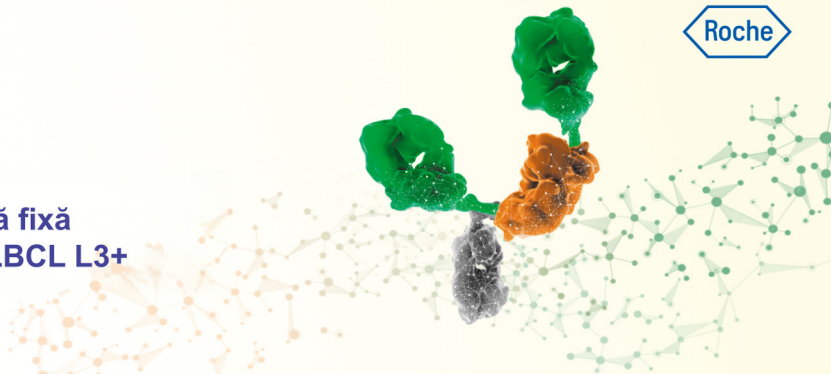
*Coffee Break*

15:35





Primul anticorp bispecific cu durată fixă  
de tratament pentru pacienții cu DLBCL L3+



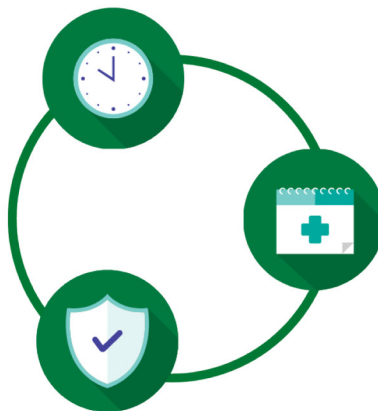
COLUMVI redefinește tratamentul DLBCL L3+ printr-o durată fixă și o schemă de dozare simplificată<sup>1</sup>

### Tratament cu durată fixă

12 cicluri (21 de zile fiecare)  
14 perfuzii  
în aproximativ 8,3 luni

### Profil de siguranță ușor de gestionat

SEC este gestionabil, previzibil  
și în principal scăzut



### Schemă de dozare simplă

**Ciclul 1:** tratament anterior cu  
obinutuzimab (GpT) și creșterea  
treptată a dozei de COLUMVI

**Ciclurile 2-12:** COLUMVI în doză  
fixă la fiecare 3 săptămâni

Mulțumită duratei fixe a tratamentului, a schemei de dozare simple și a profilului de siguranță ușor de gestionat, COLUMVI (glofitamab) devine o opțiune imediată și practică pentru pacienții cu prognostic nefavorabil.<sup>1</sup>

▼ Acest medicament face obiectul unei monitorizări suplimentare. Acest lucru va permite identificarea rapidă de noi informații referitoare la siguranță. Profesioniștii din domeniul sănătății sunt rugați să raporteze orice reacții adverse suspectate.

Acest material se adresează exclusiv profesioniștilor din domeniul sănătății. Acesta este un produs care se eliberează pe baza de prescripție medicală restrictivă. Înainte de prescripție, vă rugăm să consultați prospectul produsului Columvi. Vă rugăm să raportați evenimentele adverse apărute în timpul tratamentului cu medicamente Roche la [romania.drug\\_safety@roche.com](mailto:romania.drug_safety@roche.com) și [www.anm.ro](http://www.anm.ro).

**Referințe bibliografice:** 1. Dickinson MJ, Carlo-Stella C, Morschhauser Fet al. Glofitamab for relapsed or refractory diffuse large B-cell Lymphoma (Glofitamab în limfomul difuz cu celule B mari refractar sau recidivat). *N Engl J Med.* 2022; 387: 2220-2231. doi:10.1056/NEJMoa2206913

**Legendă:** 3L + DLBCL, limfom difuz cu celule B mari, de linia a treia sau ulterior; CRS, sindrom de eliberare de citokine; GpT, tratament prealabil cu obinutuzumab; Q3W, la fiecare trei săptămâni.



Roche România SRL, Bulevardul Poligrafiei 1A, Clădirea Ana Tower,  
Recepție - etaj 15, Sector 1, București, România, 013704.  
Tel.: 021-206.47.01, Fax: 021-206.47.00.  
[romania.info@roche.com](mailto:romania.info@roche.com); [www.roche.ro](http://www.roche.ro)  
Data creării materialului: Septembrie 2025 M-RO-00003055

Aflați mai multe despre  
COLUMVI (glofitamab)  
scanând codul QR  
alăturat:





# Aducem **inovații rare** bolilor rare

**PARTENER  
ÎN  
HEMATOLOGIE**

- Rol central în **Hemofilia A și B**
- Extindem posibilitățile în **Trombocitopenia Imună Primară (TPI)**
- Inspirăm schimbarea în **Hemoglobinuria Paroxistică Nocturnă (HPN)**
- Inovație în tratamentul infecțiilor cu bacterii **GRAM-NEGATIV** rezistente la carbapeneme



Consultați RCP-ul produsului ALPROLIX®, accesând codul QR alăturat:



Consultați RCP-ul produsului ASPAVELI™, accesând codul QR alăturat:



Consultați RCP-ul produsului DOPTelet®, accesând codul QR alăturat:



Consultați RCP-ul produsului Elocta®, accesând codul QR alăturat:



Consultați RCP-ul produsului Fetrocja®, accesând codul QR alăturat:



\*Acest medicament face obiectul unei monitorizări suplimentare. Acest lucru va permite identificarea rapidă de noi informații referitoare la siguranță. Profesioniștii din domeniul sănătății sunt rugați să raporteze orice reacții adverse suspectate. Reacțiile adverse suspectate se raportează la Agenția Națională a Medicamentului și a Dispozitivelor Medicale din România (adr@anm.ro) sau la Swedish Orphan Biovitrum S.R.O. Praga – Sucursala București (mail.ro@sobi.com).

Sobi, Alprolix, Elocta, Doptelet, Aspaveli sunt mărci înregistrate ale companiei Swedish Orphan Biovitrum AB (publ). Fetrocja este distribuit în baza unui acord cu Shionogi. © 2025 Swedish Orphan Biovitrum AB (publ) - Toate drepturile rezervate. Swedish Orphan Biovitrum S.R.O. Praga - Sucursala București, Calea Victoriei nr. 145, Sector 1, București, România, www.sobi.com  
Data pregătirii: Septembrie 2025





The 31<sup>th</sup>  
National Conference of the  
**Romanian Society  
of Hematology**

[www.srh-events.ro](http://www.srh-events.ro)

**October 1-5, 2025**  
Palace of the Parliament  
**Bucharest**

Friday, October 3<sup>rd</sup> | Palace of the Parliament – Take Ionescu Hall

## **JOINT SESSION BMSG – RSH**

Chairpersons: Jelena Bila, Alma Cili

15:35 **Multiple myeloma treatment landscape; from rarely planted trees to jungle of available medicines**

15:50 Samo Zver (Slovenia)

15:50 **Real-Time treatment of Multiple Myeloma, data in the Last Five Years in Albania, 2019-2023**

16:05 Alma Cili (Albania)

16:05 **Prognostic Indexes and Their Treatment Implications in Multiple Myeloma Patients: RWE Data**

16:20 Aleksandra Sretenovic (Serbia)

16:20 **TP53 Double-Hit in multiple myeloma: insights from an ongoing study**

16:35 Onda-Tabita Călugăru, Sorina Bădeliță, Cerasela Jardan, Mihaela Dragomir, D. Coriu (Romania)

16:35 **Treating relapsed/refractory multiple myeloma patients - real world evidence –experiences of the Croatian cooperative group for hematologic diseases (KROHEM)**

16:50 Josip Batinic (Croatia)

16:50 **Montenegrin experience in the treatment of non-transplant eligible NDMM - case presentation**

17:05 Enisa Zaric (Montenegro)

17:05 **Autologous stem cell transplantation in the era of immunotherapy: DVTD versus VCD induction in newly diagnosed multiple myeloma**

17:20 Diana-Marina Fortoes, Elena Nicoric, I. Antohe, Elena Dolachi-Pelin, Roxana Dumitru, C. Dănilă, Angela Dăscălescu (Romania)

The 31<sup>th</sup>  
National Conference of the  
**Romanian Society  
of Hematology**

[www.srh-events.ro](http://www.srh-events.ro)

October 1-5, 2025  
Palace of the Parliament  
Bucharest



17:20 **Autologous transplantation in the treatment of patients with multiple myeloma in Republic of North Macedonia**  
17:35 Sonja Genadieva Stavric

17:35 **Pleuro-pulmonary extramedullary plasmacytomas in multiple myeloma: What 15 years of clinical practice have taught us**  
17:50 Sînziana Barbu, Larisa Zidaru, Diana Preda, Andreea Jercan, Camelia Dobrea, Didona Vasilache, Monica Popescu, Codruța Popa, D. Coriu, Sorina Bădeliță (Romania)

17:50 **Monoclonal gammopathy of renal significance: from MGUS to kidney damage – experience of Fundeni Clinical Institute**  
18:05 Larisa Zidaru, Sînziana Barbu, Andreea Jercan, Oana Diana Preda, Nicoleta Petre, D. Coriu, Sorina Bădeliță (Romania)

18:05 **Hereditary Transthyretin Amyloidosis (hATTR) - A Clinical Case and Insights from Romanian Experience**  
18:20 Andreea Jercan, Sorina Bădeliță, D. Coriu (Romania)

18:20 **Evaluation and prediction of coagulation status in amyloidosis**  
18:35 M. Himcinschi (Romania)

Friday, October 3<sup>rd</sup> | Palace of the Parliament – Take Ionescu Hall

## GENERAL ASSEMBLY OF THE ROMANIAN SOCIETY OF HEMATOLOGY

18:45  
19:30 General Assembly of the **Romanian Society of Hematology**





The 31<sup>th</sup>  
National Conference of the  
**Romanian Society  
of Hematology**

**October 1-5, 2025**  
Palace of the Parliament  
**Bucharest**

[www.srh-events.ro](http://www.srh-events.ro)

Friday, October 3<sup>rd</sup> | Palace of the Parliament – Nicolae Iorga Hall

## COMPANY SYMPOSIA SESSION I

Chairpersons: Gabriel Ghiaur, Bogdan Ionescu

09:00 **BMS Symposium**  
09:20 Luspatercept: Emerging Data and Clinical Insights  
Iulia Ursuleac

**Astellas Symposium**  
Beyond the horizon: Learnings from clinical and real-world experience in FLT3mut+ R/R AML  
09:20 Exploring the landscape for FLT3-mutated relapsed/refractory acute myeloid leukaemia (FLT3mut+ R/R AML)  
10:20 *Moderator: Gabriel Ghiaur*  
Optimizing the Management of FLT3+mut R/R AML in real life settings  
Gabriel Ghiaur, Bogdan Ionescu, Ioana Rus, Amalia Titieanu

**Amgen Symposium**  
Exploring New Frontiers in Therapy: Blinatumomab in the Consolidation Phase of the GRAALL Protocol in Acute Lymphoblastic Leukemia  
10:20  
10:40 *Moderator: Bogdan Ionescu*  
*Speaker: Nicolas Boissel*

10:40  
11:00 *Coffee Break*

The 31<sup>th</sup>  
National Conference of the  
**Romanian Society  
of Hematology**

[www.srh-events.ro](http://www.srh-events.ro)

October 1-5, 2025  
Palace of the Parliament  
Bucharest



Friday, October 3<sup>rd</sup> | Palace of the Parliament – Nicolae Iorga Hall

## COMPANY SYMPOSIA SESSION II

Chairpersons: Sorina Bădeliță, Cătălin Dănăilă

11:00 **Johnson & Johnson Symposium**  
11:45 Practical application of EHA-EMN 2025 guidelines for Newly Diagnosed Multiple Myeloma (NDMM)  
Philippe Moreau

11:45 **Johnson & Johnson Symposium**  
12:15 Practical application of EHA-EMN 2025 guidelines for Triple Class Exposed Relapsed/Refractory Multiple Myeloma (TCE RRMM): optimising management with bispecific antibodies  
Roberto Mina

12:15 **Takeda Symposium**  
12:35 Walking the tightrope: Benefit-risk of patients at risk of infection  
Sorina Bădeliță

12:35 **AMGEN Symposium**  
13:15 How Far Can Carfilzomib Take Us in Treating Multiple Myeloma?  
*Moderator: Sorina Bădeliță*  
*Speaker: Meletios Athanasios Dimopoulos*

13:15  
14:00 *Lunch break*



**Kyprolis**<sup>®</sup>  
(carfilzomib) pulbere  
pentru soluție  
injectabilă

Pentru tratamentul pacienților adulți  
cu mielom multiplu recăzut sau refractar

**Alegeți KYPROLIS**<sup>®</sup>  
pentru o perspectivă clară, pe termen lung



Pentru informații complete, consultați Rezumatul caracteristicilor produsului.  
ROU-171-0424-80005

**AMGEN**

Amgen România SRL  
Bucharest Business Park, Șos. București-Ploiești nr.1A  
Clădirea A, etaj 2, Sector 1, Cod 013681, București, România  
Tel: +40215273000, Fax: +40215273001  
safety-romania@amgen.com; www.amgen.ro



# TAKE A STAND FOR LONGER SURVIVAL

in Relapsed or Refractory FLT3m+ AML  
with XOSPATA™ vs. salvage chemotherapy<sup>1</sup>

Median Overall Survival

**9.3** months with  
**XOSPATA (n=247)**

vs. 5.6 months with salvage chemotherapy (n=124)  
HR=0.637 (95% CI: 0.490–0.830); p=0.0004<sup>1</sup>

**XOSPATA™**  
gilteritinib 40mg  
tablets

**AML** – acute myeloid leukaemia; **CI** – confidence interval; **FLT3m+** – FMS-like tyrosine kinase 3 mutated; **HR** – hazard ratio

**Reference: 1.** XOSPATA Summary of Product Characteristics.



Scan the QR code  
for Xospata SmPC

For full prescribing information please refer to the Summary of Product Characteristics.

Xospata 40 mg (gilteritinib) film-coated tablets is dispensed based on restrictive medical prescription PR.

This promotional material is intended for healthcare professionals.

Additional information can be obtained at <http://www.astellas.com> and at S.C. Astellas Pharma S.R.L., One United Tower, Calea Floreasca, No. 165, Sector 1, Bucharest, tel: 0213610495 and fax: 0213610496.

For adverse event reporting contact your local representative at tel: 0213610492 and [farmacovigilenta.ro@astellas.com](mailto:farmacovigilenta.ro@astellas.com).

For additional medical information, please contact [medinfo.est-m@astellas.com](mailto:medinfo.est-m@astellas.com).

Date of preparation: August 2025

MAT-RO-XOS-2025-00033





The 31<sup>th</sup>  
National Conference of the  
**Romanian Society  
of Hematology**

[www.srh-events.ro](http://www.srh-events.ro)

**October 1-5, 2025**  
Palace of the Parliament  
**Bucharest**

Friday, October 3<sup>rd</sup> | Palace of the Parliament – Nicolae Iorga Hall

## COMPANY SYMPOSIA SESSION III

Chairpersons: Mihnea Zdrenghea, Horia Bumbea

14:00

### **Takeda Symposium**

Tolerability and efficacy of BrECADD versus BEACOPP in advanced stage Hodgkin lymphoma

14:10

Oana-Diana Preda

14:10

### **AbbVie Symposium**

VENCLYXTO<sup>®</sup> - duration matters. Current treatment strategy in CLL

14:50

Horia Bumbea, Mariana Vasilică, Mihaela Lăzăroiu

14:50

### **AbbVie Symposium**

Tepkinly<sup>®</sup>: From an unmet need to a real opportunity for patients with DLBCL in L3+

15:15

Angela Dăscălescu

15:15

### **AstraZeneca Symposium**

Fixed-duration therapy in chronic lymphocytic leukemia (CLL): Young & Fit... & Free

15:35

Horia Bumbea

15:35

### **AstraZeneca Symposium**

Mantle Cell Lymphoma (MCL) – a paradigm for progress, BTKi drive practice change?

16:15

Mihaela Andreescu, Mihnea Tudor Zdrenghea

16:15

*Coffee Break*

16:30

The 31<sup>th</sup>  
National Conference of the  
**Romanian Society  
of Hematology**

[www.srh-events.ro](http://www.srh-events.ro)

October 1-5, 2025  
Palace of the Parliament  
Bucharest



Friday, October 3<sup>rd</sup> | Palace of the Parliament – Nicolae Iorga Hall

## COMPANY SYMPOSIA SESSION IV

Chairpersons: Ciprian Tomuleasa, Andrei Coliță

16:30 **Pfizer Symposium**  
16:50 Treatment optimization in RRMM: the role & importance of ELREXFIO (Erlanatumab)  
Sorina Bădeliță

16:50 **Takeda Symposium**  
17:10 Personalized Therapy and Treatment Approaches in Multiple Myeloma  
Meletios Athanassios Dimopoulos

17:10 **Grindeks Kalceks Symposium**  
17:40 Pomalidomide Grindeks: A new perspective in the treatment of multiple myeloma  
Ciprian Tomuleasa

17:40 **Stada Symposium**  
18:00 Clinical algorithm for the effective use of lenalidomide: how to turn challenges into optimal response  
Sorina Bădeliță  
Patient's voice



Friday, October 3<sup>rd</sup> | Palace of the Parliament – Nicolae Iorga Hall

## E-POSTER SESSION I

Chairpersons: Ioana Ioniță, Mihaela Andreescu

18:00 **Between cardiotoxicity and disease progression: Challenges in the management of relapsed FLT3-ITD AML**

18:05 Maria Bacanu, Meilin Omer, Mihaela Andreescu

18:05 **Single-center experience with Asciminib in previously treated chronic myeloid leukemia patients in routine clinical practice**

18:10 Mara-Caterina Bălan, Alexandra Damaschin-Țovaru, M.E. Lăpădat, Irina Nicoleta Triantafyllidis, Anca Mariana Ciobanu, Marina Dănilă, Carmen Șaguna, A. Turbatu, A. Coliță, Oana Stanca

18:10 **An atypical case of Richter's transformation**

18:15 Daniela-Marina Bucur Mihăilescu, R. Stoia, Camelia Dobrea, D. Coriu

18:15 **Reclassification of TP53 variants in Oncogenetics**

18:20 Elena Bulancea, Ștefania Iordache, Cerasela Jardan, Onda-Tabita Călugăru

18:20 **A case of chronic myeloid leukemia associated with uterine corpus neoplasm**

18:25 Irina Buzatu, Emilia Vinturis, Luminița Ocroteală, Doriană Duta, Ana Maria Patrascu, Janina Goanta, Ionela Rotaru, Alina Maria Ilie, Amelia Maria Găman

18:25 **Subcutaneous panniculitis-like t-cell lymphoma: a possible cause for complex neurological manifestations**

18:30 T. Cârloanță, Carmen Purcariu, Iustina Roșu

18:30 **Why not treat MZL with plasmocytic differentiation as a myeloma?**

18:35 E. Ciorabai, M. Crainicu, F. Puiu, A. Dontu I. Teodorescu, G. Borsaru, N. Berbec, A. Coliță

18:35 **Large B-cell diffuse non-Hodgkin lymphoma with primary cardiac involvement**

18:40 F. Codreanu, I. Vinogradov, Cristina Făgăraș, D. Goje, Maria Iordache

18:40 **Beyond routine haemostasis tests: diagnosing congenital factor XIII deficiency**

18:45 Ruxandra-Viviana Drăghici, Sorina-Nicoleta Bădeliță, Valentina Uscătescu, Sinziana Barbu, D. Coriu

18:45 **Mortal challenges in acute leukemia - mucormycosis. Clinical case**

18:50 Ingrid Drimuș, Ioana Ioniță, Florica Ghilezan

18:50 **VEXAS Syndrome: The Patient's Helplessness in the Face of a Rare Disease**

18:55 Andreea-Florina Dumitru, C. Jurcuț, A. Coliță, Al. Stieber, R.I. Dumitru, Nicoleta-Mariana Berbec

18:55 **A case of Hodgkin's lymphoma associated with pulmonary tuberculosis**

19:00 Doriana Duta, Alexandra Ionescu, Amelia Maria Găman



The 31<sup>th</sup>  
National Conference of the  
**Romanian Society  
of Hematology**

[www.srh-events.ro](http://www.srh-events.ro)

**October 1-5, 2025**  
Palace of the Parliament  
**Bucharest**

Friday, October 3<sup>rd</sup> | Palace of the Parliament - Human Rights Hall

## **SESSION: MANAGEMENT, STRATEGY, ORGANIZATION**

Chairpersons: Georgeta Hanganu, Ecaterina Negoită

08:30 **Legislative news and strategic perspectives in civil-military cooperation in the field of blood transfusion**  
08:45 Maria-Cristina Ranetti, Roxana-Gabriela Pricop, M.E. Ion, Beatrice-Cristina Ivan, Adela-Elena Zamfirescu

08:45 **Digitalization - a necessity for reducing risks in a blood transfusion center**  
09:00 Larisa Corobcean



The 31<sup>th</sup>  
National Conference of the  
**Romanian Society  
of Hematology**

[www.srh-events.ro](http://www.srh-events.ro)

October 1-5, 2025  
Palace of the Parliament  
Bucharest



Friday, October 3<sup>rd</sup> | Palace of the Parliament - Human Rights Hall

## **SESSION: DONATION/DONORS**

Chairpersons: Georgeta Hanganu, Ecaterina Negoită

09:00 **The role of the nurse in the Bucharest transfusion center**  
09:15 E.C. Golgot, Nicoleta Cobirlie, Ingrid-Cristina Nedelcu

09:15 **Possible reactions and risks before and after blood donation. Case study - CTSMB**  
09:30 Florica Meliacă, Silvia Gina Ghencea, Georgeta Badea

09:30 **Study on the presence of Kell antigen in blood donors**  
09:45 Beatrice Adela Cristian, Nicola Beatrice Cristian

09:45 **The impact of the increase in the value of the meal voucher on blood donors within CTS Bucharest - 2023-2024**  
10:00 Adela Cîrstea

10:00 **Roche Symposium: Protecting the safety of blood transfusion. Complementary roles of NAT and Serology**  
10:45 Despina Makri

10:45 *Coffee Break*  
11:00

# TRATAMENTUL PORFIRIEI HEPATICE ACUTE

LA ADULȚI ȘI ADOLESCENȚI CU VÂRSTA DE 12 ANI ȘI PESTE



**GIVLAARI<sup>®</sup> (DCI Givosiran) 189 mg/ml soluție injectabilă**

Deținătorul APP Alnylam Netherlands B.V., Antonio Vivaldistraat 150, 1083HP Amsterdam, Olanda. Numărul de APP: **EU/1/20/1428/001**.

Data primei autorizări **2 martie 2020**. Data revizuirii textului **11/2024**.

Apel la raportarea reacțiilor adverse. Evenimentele adverse pot fi raportate prin intermediul sistemului național de raportare.

Totodată, reacțiile adverse suspectate se pot raporta și către reprezentanța locală a deținătorului autorizației de punere pe piață, la următoarele date de contact:

**Genesis Biopharma România S.R.L.**

Calea 13 Septembrie Nr. 90, Tronson 1, Et.I, Camera 1.04, Sector 5, București, România; Tel.: 0040 214034074; Fax: 0040 214034075;

Adrese email: [medinfo@genesispharmagroup.com](mailto:medinfo@genesispharmagroup.com); [phvgpr@genesispharmagroup.com](mailto:phvgpr@genesispharmagroup.com); Website: <https://www.genesispharma.com/>;

Medicament eliberat pe bază de prescripție medicală restrictivă - PR.

Acest material promoțional este destinat profesioniștilor din domeniul sănătății.

Informații detaliate privind acest medicament sunt disponibile pe site-ul Agenției Europene pentru Medicamente <http://www.ema.europa.eu>

[https://www.ema.europa.eu/ro/documents/product-information/givlaari-epar-product-information\\_ro.pdf](https://www.ema.europa.eu/ro/documents/product-information/givlaari-epar-product-information_ro.pdf);

GIVLAARI<sup>®</sup> is a trademark of Alnylam Pharmaceuticals, Inc.

© 2025 Alnylam Pharmaceuticals, Inc. All rights reserved. Developed and produced by AlnylamPharmaceuticals.

GIV\_RO\_AHP\_journal add\_\_09.2025



**Adcetris**<sup>®</sup>  
brentuximab vedotin

**NINLARO**<sup>™</sup>  
ixazomib capsules

**HyQvia**  
Imunoglobulină Umană Normală (10%)  
Hialuronidază Umană Recombinantă

**Obizur**▼  
[Factor antihemofilic (recombinant),  
secvență porcină]

**ADYNOVI**▼  
Ruriococog alfa pegol (Factor de coagulare VIII  
recombinant uman pegylat)



▼ Acest medicament face obiectul unei monitorizări suplimentare. Acest lucru va permite identificarea rapidă de noi informații referitoare la siguranță. Profesioniștii din domeniul sănătății sunt rugați să raporteze orice reacții adverse suspectate. Pentru mai multe informații referitoare la reacțiile adverse și modalitatea de raportare a acestora, vă rugăm să consultați Rezumatul Caracteristicilor Produsului – secțiunea 4.8.

Acest material este destinat profesioniștilor din domeniul sănătății.

Medicamente eliberate pe bază de prescripție medicală restrictivă PR.

Profesioniștii din domeniul sănătății sunt rugați să raporteze orice reacție adversă suspectată la Takeda Pharmaceuticals SRL la adresa de email: AE.ROU@takeda.com sau la Agenția Națională a Medicamentului și a Dispozitivelor Medicale din România, Str. Aviator Sănătescu nr. 48, sector 1, București O11478-RO, e-mail: adr@anm.ro, Website: www.anm.ro.

Pentru informații medicale suplimentare vă rugăm să contactați medinfoemea@takeda.com.

Înainte de a prescrie Adcetris,  
vă rugăm să citiți Rezumatul  
caracteristicilor produsului  
accesând codul QR alăturat



Înainte de a prescrie Ninlaro,  
vă rugăm să citiți Rezumatul  
caracteristicilor produsului  
accesând codul QR alăturat



Înainte de a prescrie HyQvia,  
vă rugăm să citiți Rezumatul  
caracteristicilor produsului  
accesând codul QR alăturat



Înainte de a prescrie Obizur,  
vă rugăm să citiți Rezumatul  
caracteristicilor produsului  
accesând codul QR alăturat



Înainte de a prescrie Adynovi,  
vă rugăm să citiți Rezumatul  
caracteristicilor produsului  
accesând codul QR alăturat



**Takeda Pharmaceuticals S.R.L.**

Piața Presei Libere nr. 3-5, Clădirea City Gate, Turn Sud, Aripa Dreaptă, Etajul 15,  
Sector 1, OP 013702, București, România,  
tel: +40 21.335.03.91; fax: +40 21.335.03.94

C-APROM/RO/TAK/0005  
September 2025



Friday, October 3<sup>rd</sup> | Palace of the Parliament - Human Rights Hall

## **IN MEMORIAM: DR. FLORENTINA VLĂDĂREANU – PAST PRESIDENT OF THE NATIONAL BLOOD TRANSFUSION SOCIETY OF ROMANIA**

Chairpersons: Georgeta Hanganu, Ecaterina Negoită

11:00 **And of the other colleagues who passed away...**  
11:15 Andrei Rosin, Mihaela Hoinărescu

11:15 **Blood donor selection in 2025: how far are we from European standards?**  
11:30 **Differences between the EDQM guide (chapter 2) and the legislation of Romania - order 1193/2007**  
Alexandra Ionete, Elena Lucia Grijac

11:30 **Comparative analysis of some donor eligibility criteria: SRTS and western transfusion systems**  
11:45 A.H. Bugner

**Chronos Symposium**  
11:45 Collection of blood components with the Trima apheresis equipment and automatic whole blood processing with  
12:15 the automatic Reveos system - a step forward in obtaining platelet concentrates  
Răzvan Mihai Călin

12:15 **Discussions on the papers presented in the morning**  
13:00

13:00 *Lunch Break*  
14:00

Friday, October 3<sup>rd</sup> | Palace of the Parliament - Human Rights Hall

## **SESSION: BIOLOGICAL CONTROL I**

Chairpersons: Luminița Rusen, Alexandra Zagrean

14:00 **Optimizing the detection of blood-borne infections in donors: ELISA VS. Chemiluminescence**

14:15 Irina Gabriela Răchită

14:15 **Occult hepatitis B among donors - 4 years of experience testing blood through method NAT, în C.T.S. al M.Ap.N.**

14:30 Adela-Elena Zamfirescu, Irina Butte

14:30 **Blood-borne infectious agents: Chikungunia virus**

15:00 Georgeta Hanganu, Beatrice Dragomir, Mihaela Catana, Daniela Gheorghe, Anca Sbarcea

15:00 **Silent infections under observation: evolution of lues seroprevalence in blood donors in western Romania**

15:15 Rodica Lighezan, Denisa Maria Petofi, Claudia Daniela Șerban, Zoe Cojan, P. Tănase, Elena Kosa, Timea Elisabeta Somogyi, Diana Luisa Lighezan

15:15 **Friendly robots near us**

15:30 Alexandra Zagrean

15:30 **Use of the enzyme test in the immunohematological control of donated blood: efficiency, efficacy and impact**

15:45 Alina Mirella Dobrota, Anamia Panait

15:45

16:00

*Coffee Break*

Friday, October 3<sup>rd</sup> | Palace of the Parliament - Human Rights Hall

## **SESSION: BIOLOGICAL CONTROL II**

Chairpersons: Luminița Rusen, Alexandra Zagrean

16:00

### **ELUTIA - within everyone's reach or an elitist technique?**

16:15

Andreea Gabriela Ionescu, Carmen Calugaroiu, Carasela Ardeleanu Trusca, Diana Ene, Laura Zamfir, Doina Gheorghe, B. Mitroaica, Anamia Panait

16:15

### **Addressing and managing the challenges related to blood transfusion - presentation of immunohematology case series**

16:30

R. Suci, A. Stancu, I. Cojocaru, M. Cosma, M. Ailenei, A.I. Zagrean, L.E. Grijac

16:30

### **The impact of the information provided on the interpretation of immunohaematological tests and published results. Case presentation**

16:45

Alina Mirella Dobrota, Anamia Panait, Florina Madalina Oniceanu

16:45

### **Discussions on the papers**

17:15

17:15

General Assembly of the **National Society of Blood Transfusion**

18:15



# Pomalidomidă Grindeks



O nouă perspectivă în tratamentul  
mielomului multiplu

Conf. Dr. Tomuleasa Ciprian

Medic primar hematologie,  
șef de lucrări și cercetător în cadrul  
UMF "Iuliu Hațieganu" din Cluj-Napoca.



Grindex





**SRH** 2025

**Saturday,**  
*October 4<sup>th</sup>*





ATUNCI CÂND

MYCOSIS FUNGOIDES PROGRESEAZĂ, INTERVENȚIA PRECOCE

AR PUTEA FACE  
DIFERENȚA.<sup>1</sup>

ATUNCI CÂND PETELE ȘI PLĂCILE  
SE AGRAVEAZĂ, POATE FI TIMPUL  
PENTRU POTEFIGEO®!<sup>1</sup>

În cazul mycosis fungoides care  
progresează, celulele T maligne  
continuă să se acumuleze la nivel  
cutanat, afectând astfel micro-mediul  
celular și provocând inflamație, ceea  
ce poate determina agravarea petelor  
și a plăcilor.<sup>2,3</sup>

DOAR POTEFIGEO® se leagă în mod  
selectiv de CCR4, receptor exprimat  
pe celulele T maligne din MF & SS,  
activând procesul de distrugere prin  
citotoxicitate celulară dependentă de  
anticorpi.<sup>1,4-6</sup>



PORTRETIZARE.



**POTEFIGEO®**  
(mogamulizumab)

4 mg/ml concentrat pentru soluție perfuzabilă

POTEFIGEO® (mogamulizumab) este indicat pentru tratamentul pacienților adulți cu mycosis fungoides (MF) sau sindrom Sézary (SS) cărora li s-a administrat anterior cel puțin o terapie sistemică.

POTEFIGEO® este marcă comercială înregistrată a Kyowa Kirin Holdings B.V. Toate drepturile rezervate.

**Referințe:** 1. POTEFIGEO. Rezumatul caracteristicilor produsului. Septembrie 2025. 2. Stolareenco V, Namini MRJ, Hasselager SS, et al. Cellular interactions and inflammation in the pathogenesis of cutaneous T-cell lymphoma. *Front Cell Dev Biol.* 2020;8:851. 3. Cerroni L. Mycosis fungoides—clinical and histopathologic features, differential diagnosis, and treatment. *Semin Cutan Med Surg.* 2018;37(1):2-10. 4. Eltarhoni K, Kamel F, Ihebunezie K, Nisar P, Soloviev M. Therapeutic antibodies in cancer treatment in the UK. *Int J Mol Sci.* 2022;23(23):14589. 5. Ishida T, Iida S, Akatsuka Y, et al. The CC chemokine receptor 4 as a novel specific molecular target for immunotherapy in adult T-cell leukemia/lymphoma. *Clin Cancer Res.* 2004;10(22):7529-7539. 6. Duvic M, Evans M, Wang C. Mogamulizumab for the treatment of cutaneous T-cell lymphoma: recent advances and clinical potential. *Ther Adv Hematol.* 2016;7(3):171-174.

Acest material promoțional este destinat profesioniștilor din domeniul sănătății. Acest medicament se eliberează pe bază de prescripție medicală restrictivă, PR. Vă rugăm să consultați Rezumatul Caracteristicilor Produsului POTEFIGEO® înainte de prescriere. Profesioniștii din domeniul sănătății sunt rugați să raporteze orice reacție adversă suspectată contactând Agenția Națională a Medicamentului și a Dispozitivelor Medicale din România, Str. Aviator Sănătescu nr. 48, sector 1, București 011478 - RO, e-mail: adr@anm.ro sau reprezentanța locală a deținătorului autorizației de punere pe piață, Swixx Biopharma SRL la următoarele date de contact: e-mail medinfo.romania@swixxbiopharma.com; tel +40 371 530 850. Pentru aspecte legate de promovarea și distribuția medicamentului în România, vă rugăm să vă adresați reprezentantului local Swixx Biopharma SRL, e-mail romania.info@swixxbiopharma.com; tel +40 371 530 850.



Scanați QR Code  
pentru RCP complet  
Septembrie 2025

**Swixx BioPharma**

Swixx Biopharma S.R.L., Șos. București-Ploiești 1A Clădirea A, sector 1,  
013681, București, România  
Tel. +40 371 530 850; e-mail romania.info@swixxbiopharma.com

PM-RO-2025-9-5600 din 17/09/2025

**Kyowa KIRIN**



Saturday, October 4<sup>th</sup> | Palace of the Parliament – Take Ionescu Hall

## SESSION: ACUTE LEUKEMIAS AND MYELODYSPLASTIC SYNDROME

Chairpersons: Amelia Găman, Mihnea Zdrengea, Bogdan Ionescu

08:30

### **Challenges in NGS diagnosis and clinical practice - where did the good prognosis go?**

08:45

Maria Camelia Stancioaica, Onda Călugăru, Alexandra Ghiaur, B. Ionescu, Roxana Hirjan, Mihaela Cirstea, Aurelia Tatic, Silvia Macarie, D. Coriu

08:45

### **Next-Generation sequencing in acute myeloid leukemia: The prognostic value of mutation categories in a Real-World Single Center Cohort**

09:00

Valeria Bereşteanu, I. Antohe, Elena Dolachi-Pelin, Elisabeta Lupu, A. Cianga, C. Minciună, Amalia Titieanu, Elena Nicorici, Diana-Marina Fortoeş, C. Dănăilă, Angela Dăscălescu

09:00

### **Rapid molecular diagnosis as standard of care in infections associated with acute myeloid leukemia patients**

09:15

M.R. Cernat, B.A. Cristian, P. Mihăilescu, A. Ipate, M. Andreescu

09:15

### **Allogenic stem cell transplantation in hypomethylating agents + Venetoclax treated patients with acute myeloid leukemia in Fundeni Clinical Institute**

09:30

Andreea Andrunache, B. Ionescu, Alexandra Ghiaur, Camelia Stancioaica, Roxana Hirjan, Aurelia Tatic, D. Coriu

09:30 **FLT3 positive acute myeloid leukemia - triple therapy as an option for patients with refractory/relapsed disease - unicentric experience**  
09:45 Roxana Hirjan, Dana Frângu, Andreea Andrunache, B. Ionescu, Aurelia Tatic, Camelia Stancioaica, Alexandra Ghiaur, Mihaela Cîrstea, D. Coriu

09:45 **Allogeneic stem cell transplantation in Acute Myeloid Leukemia: The experience of the Iasi Regional Oncology Institute**  
10:00 I. Antohe, Elena Dolachi-Pelin, Elisabeta Lupu, A. Cianga, C. Minciună, Amalia Titieanu, Elena Nicorici, Valeria Bereşteanu, Diana-Marina Fortoş, C. Dănăilă, Angela Dăscălescu

10:00 **Single-center experience with inotuzumab ozogamicin in relapsed/refractory acute lymphoblastic leukemia: Data from clinical practice**  
10:15 Cristina Enache, Alexandra Ghiaur, B. Ionescu, Roxana Isabela Hirjan, Maria Camelia Stăncioaica, Aurelia Tatic, D. Coriu

10:15 **Acute B lymphoblastic leukemia with MLL gene rearrangements - A single-center retrospective analysis**  
10:30 Alexandra Crinu, B. Ionescu, Alexandra Ghiaur, Roxana Hirjan, Camelia Stancioaica, Aurelia Tatic, Al. Bardaş, D. Coriu

10:30 *Coffee Break*  
10:45

Saturday, October 4<sup>th</sup> | Palace of the Parliament – Take Ionescu Hall

## **SESSION: CHRONIC MYELOPROLIFERATIVE SYNDROMES, RARE DISEASES & VARIA**

Chairpersons: Nicoleta Berbec, Iulia Ursuleac

10:45

### **Integrating machine learning with real-world evidence to reveal TKI-based care pathways in chronic myeloid leukemia: data from 201 cases in Cluj-Napoca, Romania**

11:00

M.L. Micu, S.F. Cira, I.C. Rus, C.I. Tomuleasa, D. Dima, M.T. Zdrenghea, A. Bojan, A. Parvu, T.Torok, A. Vasilache, L. Urian, L. Jimbu, O. Mesaros, A. Bancos, M. Santa, D. Lighezan, A.B. Tigu, A. Ivancuta, A. Trifa, C. Selicean

11:00

### **Prognostic factors in polycythemia vera**

11:15

S. Portik, Laura Urian, M. Zdrenghea, Anca Vasilache, Tunde Torok, Andrada Pârveu, C. Tomuleasa, Delia Dima, Ioana Rus, Oana Mesaros, Laura Jimbu, Anca Bojan

11:15

### **Late side effects of tyrosine kinase inhibitors in the treatment of chronic myeloid leukemia. Single-center experience**

11:30

Iulia Ursuleac, V.T Stingaciu, Manuela Crisan, Mariana Vasilica, R.A Stoia, Ana Maria Moldovianu, Sorina Bădeliță, D. Coriu

11:30

### **Oxidative stress - chronic inflammation associations in primary myelofibrosis**

11:45

M.A. Găman, Cristina Mambet, Ana Iulia Neagu, Coralia Bleotu, D. Coriu, Amelia Maria Găman, Carmen Cristina Diaconu



The 31<sup>th</sup>  
National Conference of the  
**Romanian Society  
of Hematology**

[www.srh-events.ro](http://www.srh-events.ro)

October 1-5, 2025  
Palace of the Parliament  
Bucharest



11:45 **Clinical characteristics and outcomes of acquired hemophilia A: A 10-years single-centre experience**  
12:00 Melen Brînză, Georgiana Gherghe, Valentina Uscătescu, D. Coriu

12:00 **Immunosuppression for acquired hemophilia A: CyDRi is a highly effective and low toxicity regimen**  
12:15 Imre Bodó

12:15 **Severe mast cell degranulation, persistent thrombocytopenia, and viral reactivation after autologous stem cell transplantation in mantle cell lymphoma**  
12:30 Ana Maria Ilinescu, Gabriela Diana Cantor, Daiana Tunari, Fl. Nițu, I. Dumitru, Brândușa Petruțescu, Delia Soare, Georgiana Elena Ene, D.S. Soare, H. Bumbea

12:30 **Synchronous multiple primary malignancies - solid and hematological malignancy - literature data and a short case series**  
12:45 Ionela Rotaru, Alina Maria Ilie, Ana Maria Patrascu, Janina Georgiana Goanta, Bianca Balteanu, Flavia Vidica

12:45 **Hereditary spherocytosis and primary myelofibrosis: coincidence or shared pathogenic mechanism?**  
13:00 Raluca Truican, Cristina Ciufu, Cristina Marinescu, Maria Oroș, Carla Perșa, H. Bumbea

13:00  
14:00 *Lunch Break*

Saturday, October 4<sup>th</sup> | Palace of the Parliament – Take Ionescu Hall

## SESSION: CHRONIC LYMPHOPROLIFERATIVE SYNDROMES

Chairpersons: Sorina Bădeliță, Andrei Coliță

14:00 **Bispecific antibodies and CAR-T in refractory DLBCL: Patient outcomes and toxicity profile**  
14:15 C. Minciună, C. Dănăilă, I. Antohe, Amalia Titieanu, Elena Nicorici, A. Cianga, Angela Dăscălescu

### **From CAR-T indication to procedure implementation: A retrospective analysis of adult patients with refractory/relapsed non-Hodgkin lymphoma at Fundeni Clinical Institute**

14:15 Lavinia-Martha Muzgoci, Oana-Ruxandra Croitoru, Oana-Diana Preda, Diana-Mihaela Grigore, Bianca Tarău,  
14:30 Sorina-Nicoleta Bădeliță, Sânziana Barbu, Iulia Ursuleac, R. Stoia, Ana-Maria Moldovianu, Al. Bardaș,  
Anca Gheorghe, C. Șerban, H. Sandu, Delia Codruța Popa, T.A. Tudor, Szofia Varady, Laura Ștefan,  
Ionela-Adela Ranete, Oana Crăciun, Alexandra Ichim, Andra David, Alina Tănase, D. Coriu

14:30 **Immunomodulatory impact of Brentuximab Vedotin on regulatory T Cells in advanced Hodgkin Lymphoma patients**  
14:45 D.N. Murariu, Oana Diana Preda, Florentina Adriana Gauianu, Bianca Tarau, Sinziana Barbu, Mihaela Uta,  
Valeria Tica, Iulia Ursuleac, Delia Codruța Popa, D. Coriu, Sorina Nicoleta Bădeliță

14:45 **Relapsed Hodgkin lymphoma: Insights from the national registry on escalated therapy and autologous stem cell transplantation**  
15:00 Oana Diana Preda, Sorina Nicoleta Bădeliță, Sânziana Barbu, Florentina Adriana Gauianu, Bianca Tarau,  
Camelia Dobrea, Iulia Ursuleac, D. Coriu

15:30 **Clinical and prognostic characteristics of patients with systemic T-cell lymphomas: A single-center experience (Fundeni Clinical Institute, 2015-2024)**  
15:15 Al. Bardaş, Ana Manuela Crisan, Miruna Elena Tarnovan, Alina Buse, Mihaela Uta, Valeria Tica, S.H. Mihail, Camelia Dobrea, D. Coriu

15:15 **Interleukin profile (IL-2, IL-10, and IL-35) in patients with mature T-cell lymphomas at diagnosis**  
15:30 Al. Bardaş, Mihaela Uta, Ana Manuela Crisan, Miruna Elena Tarnovan, Valeria Tica, Alina Buse, S.H. Mihail, Camelia Dobrea, D. Coriu

15:30 **Forays into thrombotic events in patients with malignant lymphomas and cancer**  
15:45 V. Musteață

15:45 **Impact of pregnancy and the postnatal period on the clinical course and therapeutic response in Hodgkin lymphoma: A retrospective comparative study**  
16:00 Florentina Adriana Gauianu, Oana Diana Preda, Sorina Nicoleta Bădeliță, Sinziana Barbu, Mihaela Lăzăroiu, Mihaela Găman, Loredana Cirlan, Andreea Parpala, T. Lascar, Bianca Tarau, Camelia Dobrea, Iulia Ursuleac, D. Coriu

16:00 **Chronic lymphocytic leukemia with cerebral location associated with high risk thrombophilia: diagnosis and therapeutic challenges, data from literature in correlation with clinical practice**  
16:15 Gabriela Diana Cantor, I. Dumitru, Ana-Maria Ilinescu, Daiana Tunaru, Fl. Nitu, H. Bumbea, Georgiana Ene





The 31<sup>th</sup>  
National Conference of the  
**Romanian Society  
of Hematology**

[www.srh-events.ro](http://www.srh-events.ro)

**October 1-5, 2025**  
Palace of the Parliament  
**Bucharest**

16:15  
16:30

**Classic mantle cell lymphoma with early orbital relapse - the importance of stem cell autotransplant (ASCT)**

Georgiana Ene, Ana-Maria Ilinescu, Luminița Ocroteală, Gabriela Diana Cantor, Daiana Tunaru, Fl. Nitu, H. Bumbea

16:30  
16:45

**Primary medullary follicular lymphoma associated with grade III myelofibrosis: A rare case report**

Gabriela Diana Cantor, Luminița Ocroteală, Amelia-Maria Găman

16:45  
17:00

**Screening for secondary cancers in patients with CLL or SLL: A key component of long-term management**

Ana-Maria Moldovianu, R. Stoia, Mădălina Vasilica, Iulia Ursuleac, Mihaela Cârstea, Diana Preda, D. Coriu

17:00  
17:15

*Coffee Break*

The 31<sup>th</sup>  
National Conference of the  
**Romanian Society  
of Hematology**

[www.srh-events.ro](http://www.srh-events.ro)

October 1-5, 2025  
Palace of the Parliament  
Bucharest



Saturday, October 4<sup>th</sup> | Palace of the Parliament – Take Ionescu Hall

## SESSION: MONOCLONAL GAMMOPATHIES

Chairpersons: Anca Bojan, Cătălin Dănăilă

17:15  
17:30

### **Cytokine release syndrome during bispecific antibody therapy - a single-center experience**

Corina Popovici, Laura Urian, C. Tomuleasa, M. Zdrenghea, Andrada Pârveu, Tunde Torok, Delia Dima, Anca Vasilache, Ioana Rus, Anca Bojan

17:30  
17:45

### **Treatment patterns and real-world outcomes in multiple myeloma: experience of the Hematology Department II, Colentina Clinical Hospital, Bucharest**

A.M. Iordan, A. Raitaru, D. Georgescu

17:45  
18:00

### **Central nervous system manifestations of multiple myeloma - A case series and comprehensive literature review**

Andreea Andrunache, Sinziana Barbu, Larisa Zidaru, Didona Alexa, Monica Popescu, D. Coriu, Sorina Bădeliță

18:00  
18:15

### **Multiple myeloma in the young patient: between rarity and reality**

Luminița Ocroteală, Doriană Duta, Janina Goanta, Ana Maria Patrascu, Ionela Rotaru, Amelia Maria Găman

18:15  
18:30

### **Interdisciplinary collaboration improves early diagnosis of multiple myeloma in patients with renal manifestations**

Bianca Constantin, Corina Ene, Ioana Miller, Mădălina Stăncescu, Sorina Bădeliță

18:30  
18:45

### **Personalized management of patients with dual malignancies: Multiple myeloma and a solid tumor**

Hadil Abubakr, Loredana Cirlan, Sinziana Barbu, Larisa Zidaru, Ruxandra Draghici, D. Coriu, Sorina Bădeliță



The 31<sup>th</sup>  
National Conference of the  
**Romanian Society  
of Hematology**

[www.srh-events.ro](http://www.srh-events.ro)

**October 1-5, 2025**  
Palace of the Parliament  
**Bucharest**

Saturday, October 4<sup>th</sup> | Palace of the Parliament – Nicolae Iorga Hall

## COMPANY SYMPOSIA SESSION V

Chairpersons: Mihaela Andreescu, Mihaela Lăzăroiu

09:00 **Novaintermed Symposium**  
09:15 Enhancing Transfusion Efficiency and Safety with the Grifols Solution  
Irina Visoiu

**Educational session**  
**Anemia and iron deficiency: is there more to say?**

*Moderator: Ioana Ioniță*

09:15 Optimizing iron treatment: from assessment to personalized therapeutic intervention  
Mihaela Andreescu

10:00 Iron deficiency anemia: a pathology that redefines interdisciplinary collaboration  
Ioana Ioniță

Transfusions under the safety microscope: current perspectives, risks and solutions  
Mihaela Lăzăroiu

10:00 *Coffee Break*  
10:20



The 31<sup>th</sup>  
National Conference of the  
**Romanian Society  
of Hematology**

[www.srh-events.ro](http://www.srh-events.ro)

October 1-5, 2025  
Palace of the Parliament  
Bucharest



Saturday, October 4<sup>th</sup> | Palace of the Parliament – Nicolae Iorga Hall

## COMPANY SYMPOSIA SESSION VI

Chairpersons: Daniel Coriu, Ioana Ioniță

10:20

### **Johnson & Johnson Symposium**

10:50

AL amyloidosis treatment management in 2025  
Efsthios Kastritis

### **Genesis Symposium**

*Moderator: Daniel Coriu*

Romanian clinical experience in hATTR Amyloidosis  
Sorina Bădeliță

10:50

The screening program of ATTR in Bulgaria - 2025 update

11:50

Albena Todorova

Biomarkers in ATTR - review of the Bulgarian NFL study results  
Zornitsa Pavlova

Novel variant in ATTR Bulgarian patients - Genetic and clinical characterization  
Tihomir Todorov



The 31<sup>th</sup>  
National Conference of the  
**Romanian Society  
of Hematology**

**October 1-5, 2025**  
Palace of the Parliament  
**Bucharest**

[www.srh-events.ro](http://www.srh-events.ro)

### **Sobi Symposium**

The Role of the Multidisciplinary Team in the Comprehensive Care of People with Haemophilia

*Moderator: Ioana Ioniță*

11:50

12:35

The Role of Effective Prophylaxis in Hemophilia Management: From Theory to Daily Practice

Cristina Tarniceriu

Freedom of Movement starts with Joint Protection: A Rheumatologist's Perspective on Haemophilia

Ana-Maria Ramazan

### **Takeda Symposium**

Past and Future in hemophilia A treatment

12:35

13:00

What about factor VIII?

Alok Srivastava

Tailored for You. Made for Freedom

Melen Brînză

13:00

14:00

*Lunch Break*

The 31<sup>th</sup>  
National Conference of the  
**Romanian Society  
of Hematology**

[www.srh-events.ro](http://www.srh-events.ro)

October 1-5, 2025  
Palace of the Parliament  
Bucharest



Saturday, October 4<sup>th</sup> | Palace of the Parliament – Nicolae Iorga Hall

## COMPANY SYMPOSIA SESSION VII

Chairpersons: Horia Bumbea, Amelia Găman

### Sanofi Symposium

- 14:00 Caplacizumab in aTTP: From medical emergency to clinical stability  
Oana-Diana Preda
- 14:30 accelRare: Intelligent support for every medical decision  
Mariana Vasiliță

### AstraZeneca Symposium

- Paroxysmal Nocturnal Hemoglobinuria (PNH) – Pathology, Diagnosis, Management  
*Moderator: Mihaela Andreescu*
- 14:30 PNH “at the crossroads” of intravascular hemolysis and thrombosis!  
Mihaela Andreescu
- 15:30 PNH and BMF (AA, MDS and cytopenias) – between coincidence and consequence!  
Ana-Maria Moldovianu
- Data based decisions regarding the therapeutic inhibition of the complement cascade in PNH – strategies, monitoring principles, terminal and dual inhibition  
Carmen Șaguna





The 31<sup>th</sup>  
National Conference of the  
**Romanian Society  
of Hematology**

**October 1-5, 2025**  
Palace of the Parliament  
**Bucharest**

[www.srh-events.ro](http://www.srh-events.ro)

15:30  
16:30  
**AstraZeneca Symposium**  
Reshaping PNH management: Ultomiris provides immediate, complete and sustained disease control  
Speakers: Luminița Ocroteală, Coralia Cotoraci, Horia Bumbea

16:30  
17:00  
**Novartis Symposium**  
Unmet needs in Paroxysmal Nocturnal Hemoglobinuria  
Mihaela Cornelia Lăzăroiu

17:00  
17:15  
*Coffee Break*

The 31<sup>th</sup>  
National Conference of the  
**Romanian Society  
of Hematology**

[www.srh-events.ro](http://www.srh-events.ro)

**October 1-5, 2025**  
Palace of the Parliament  
**Bucharest**



Saturday, October 4<sup>th</sup> | Palace of the Parliament – Nicolae Iorga Hall

## E-POSTER SESSION II

Chairpersons: Carmen Şaguna, Horia Bumbea

17:15  
17:20

### **Study on monoclonal gammatolites treated in the Arad Hematology Clinic during the year 2025**

Cristina Firu, Alciona Sasu, D. Laza, M. Onel, Alexandra Nădăban-Alexa, Adelina Palcu-Anghelache, D.H. Papiu, Coralia Adina Cotoraci

17:20  
17:25

### **GATA2 deficiency syndrome**

Dana Frangu, Roxana Hirjan, Camelia Stăncioaica, Diana Grigore, D. Coriu

17:25  
17:30

### **Risk stratification in chronic myeloid leukemia: clinical relevance of ELTS compared to Sokal and Hasford scores**

Diana Grasu, Elena Pirvu, Diana Malenda, Laura Tirlea, Sabina Olteanu, Raluca Cernat, Maria Bacanu, Mirela Voicu, Andreea Vasile, Viola Popov, Mihaela Andreescu

17:30  
17:35

### **From metastatic seminoma to secondary acute myeloid leukemia: a dual hemato-oncologic challenge**

Mihaela-Sabrina Herdea, Adela-Sara Ionescu, M.G. Zaidas, Andreea-Cristiana Vasile, Ana-Maria Petraru, Oana Patrinoiu, Mihaela Andreescu

17:35  
17:40

### **Race against time: acute myeloblastic leukemia, invasive fungal infection and transfusional inefficiency - a clinical case with unpredictable evolution**

Adela-Sara Ionescu, Mihaela-Sabrina Herdea, Geanina Carla Ofițeru, Mihaela Andreescu

17:40  
17:45

### **Management of CLL patients - real-world evidence from a single centre study**

Ana-Maria Iordan, Claudia Despan, Anca Raitaru, Silvia Ciortan, Minodora Onisei, I. Gelatu, Daniela Georgescu

17:45 **Multidisciplinary management of severe infectious complications in acute myelomonocytic leukemia**

17:50 Alexandra Liboteanu, B. Marin, C. Potre-Oncu, O. Potre-Oncu, E. Borsi, D. Rosca, I. Ionita

17:50 **Acute myeloid leukemias associated with DEK-NUP214 and FLT3-ITD mutations – A case series**

17:55 Silvia Ștefania Macarie, Maria Camelia Stăncioaica, Bianca Tarau, Roxana Isabela Hirjan, B. Ionescu,  
Alexandra Ghiaur, Aurelia Tatic, D. Coriu

17:55 **A challenging triad: Coexisting hereditary hemochromatosis, porphyria and hemophilia in a single patient. Case presentation and comprehensive review**

18:00 Anamaria Rita Manda, Sorina-Nicoleta Bădeliță, Sanziana Barbu, Oana Diana Preda, D. Coriu

18:00 **Primary cerebral diffuse large B-cell lymphoma**

18:05 B. Marin, Alexandra Liboteanu, Cristina Potre, O. Potre, Ema Borsi, Ioana Ioniță

18:05 **Hemolytic anemia due to maternal-fetal incompatibility in the RH system, a frequent cause of apnea of prematurity**

18:10 Adela-Valeria Neamțu, I.P. Coandă, C.V. Manda, Olivia-Garofița Mateescu, Liliana Stanca, Cătălina Coteanu,  
Simona-Daniela Neamțu

18:10 **Acute myeloid leukemia with FLT3-ITD in an elderly patient: Prognostic implications and challenges in infection management**

18:15 B. Nistor, E. Pirvu, I. Marian, S. Herdea, S. Ionescu, G. Ofiteru, V. Popov, M. Andreescu

18:15 **Immune restoration in patients with chronic lymphocytic leukemia treated with bruton's tyrosine kinase inhibitors: data from a small center**

18:20 Ana-Maria Petraru, Diana Malenda, Mihaela-Sabrina Herdea, Diana Drăgoi-Cozmaciuc, Viola Popov,  
Mihaela Andreescu



18:20 **The relevance of TBNK profiling for immune response monitoring in multiple sclerosis patients**

18:25 Codruța Popa, T. Tudor

18:25 **Evolution of Plasmacytoma to Multiple Myeloma and Challenges in Treatment of a Patient with End Stage Chronic Renal Disease**

18:30 Iustina Roșu, Carmen Purcariu, T. Cârloanță

18:30 **Long-term management of chronic myeloid leukemia**

18:35 Rafaela Stoianof, Mariana Vasilica

18:35 **The gut microbiome in chronic myeloproliferative neoplasms: A synthesis of recent literature**

18:40 Laura-Gabriela Țirlea, Alina Daniela Tănase, Mihaela Andreescu

18:40 **Acute myeloid leukemia NPM1+ associated with uterine myeloid sarcoma, atypical debut with APL mimicry and infectious pathology at presentation - diagnostic difficulties**

18:45 Daiana Tunaru, Gabriela Diana Cantor, I. Dumitru, Ana-Maria Ilinescu, Fl. Nitu, D.S. Soare, H. Bumbea, Georgiana Ene

18:45 **Peripheral T-Cell Lymphoma of Panniculitis-Like Type**

18:50 I. Vinogradov, F. Codreanu, Cristina Făgăraș, Teodora Hoinoiu, D. Pit, Maria Iordache

18:50 **Carfilzomib in relapsed multiple myeloma: response patterns in early biologic versus clinically aggressive relapse**

18:55 Mirela Carmen Voicu, Viola Maria Popov, Mihaela Andreescu, Diana Grasu

18:55 **Transfusional particularities in patients with multiple myeloma**

19:00 M.G. Zaides, Andreea-Cristiana Vasile, Mihaela-Sabrina Herdea, Diana Grasu, Oana Patrinoiu, Mihaela Andreescu, Viola Popov



The 31<sup>th</sup>  
National Conference of the  
**Romanian Society  
of Hematology**

[www.srh-events.ro](http://www.srh-events.ro)

**October 1-5, 2025**  
Palace of the Parliament  
**Bucharest**

Saturday, October 4<sup>th</sup> | Palace of the Parliament – Nicolae Balcescu Hall

## COMPANY SYMPOSIA SESSION VIII

Chairpersons: Daniel Coriu, Andrei Coliță

### **Servier Symposium**

New treatment perspectives in IDH1-positive AML for ICIE patients

09:30 Molecular testing importance in newly-diagnosed AML patient management  
10:00 Daniel Coriu

Ivosidenib – efficacy and safety data in ICIE IDH1+ AML patients  
Bogdan Ionescu

### **AbbVie Symposium**

10:00 Venclyxto+HMA: From Innovation to Consolidation  
10:25 Bogdan Ionescu

### **AstraZeneca Symposium:**

10:25 Hypertension and chronic lymphocytic leukemia (CLL): Major condition or comorbidity manageable by an  
11:05 appropriate treatment strategy? – Debate  
Andrei Coliță, Ioana Ioniță

11:05  
11:20 *Coffee Break*

The 31<sup>th</sup>  
National Conference of the  
**Romanian Society  
of Hematology**

[www.srh-events.ro](http://www.srh-events.ro)

October 1-5, 2025  
Palace of the Parliament  
Bucharest



Saturday, October 4<sup>th</sup> | Palace of the Parliament – Nicolae Balcescu Hall

## COMPANY SYMPOSIA SESSION IX

Chairpersons: Horia Bumbea, Cătălin Dănăilă

11:20  
12:05

### **Johnson & Johnson Symposium**

First-line treatment in CLL: personalized approaches for all patient categories

Horia Bumbea, Mihnea Zdrenghea, Mihaela Andreescu, Catalin Dănăilă, Mariana Vasiliță

12:05  
13:05

### **AstraZeneca Symposium:**

Treatment of patients with chronic lymphocytic leukemia (CLL) and unmutated IGHV: Fast response or sustained control? – Debate

*Moderatori: Daniel Coriu, Speakers: Cătălin Dănăilă, Mariana Vasiliță*

13:05  
14:00

*Lunch break*





The 31<sup>th</sup>  
National Conference of the  
**Romanian Society  
of Hematology**

[www.srh-events.ro](http://www.srh-events.ro)

**October 1-5, 2025**  
Palace of the Parliament  
**Bucharest**

Saturday, October 4<sup>th</sup> | Palace of the Parliament – Nicolae Balcescu Hall

## COMPANY SYMPOSIA SESSION X

Chairpersons: Ana Maria Vlădăreanu, Ionela Rotaru

14:00  
14:30

### **Swixx Symposium**

Zanubrutinib: A next generation BTKi designed for selectivity, potency, and bioavailability.  
Talha Munir

### **Roche Symposium**

#### **DLBCL - From Standard to Innovation: Building Better Outcomes for Every Patient**

*Moderator: Daniel Coriu*

14:30  
16:00

Piecing together the success of first-line DLBCL treatment  
Horia Bumbea

Unlocking second-line therapies in DLBCL to transform patient's lives  
Anca Bojan

Solving the jigsaw of therapies in heavily pre-treated patients with DLBCL  
Antonio Pinto

16:00  
16:15

*Coffee Break*

TIBSOVO® este primul și singurul inhibitor selectiv mIDH1 aprobat de EMA și FDA pentru tratamentul de primă linie al leucemiei acute mieloidă<sup>1</sup>

TIBSOVO® + AZACITIDINĂ este indicat pentru tratamentul pacienților adulți cu leucemie mieloidă acută nou diagnosticată și o mutație IDH1 R132, care nu sunt eligibili pentru a primi chimioterapie de inducție standard<sup>1</sup>

APROBAT  
EMA

TIBSOVO® este recomandat de ghidurile Internaționale<sup>2,3</sup>

IDH1 R132

 **TIBSOVO®**  
ivosidenib comprimate 250mg

**TIBSOVO® OFERĂ PACIENȚILOR DUMNEAVOASTRĂ CU LAM mIDH1 TRATAȚI ÎN PRIMA LINIE:**

**BENEFICIU ÎN  
SUPRAVIEȚUIREA  
GENERALĂ**

În studiul inițial AGILE  
**24,0 luni**  
(95% ÎI, 11,3-34,1) vs 7,9 luni cu PBO + AZA  
(95% ÎI, 4,1-11,3) (RH, 0,44; [95% ÎI, 0,27-0,73];  
 $P=0,001$ )<sup>4</sup>



În urmărirea pe termen lung  
**29,3 luni**  
(95% ÎI, 13,2 - nedeterminat) vs 7,9 luni cu  
PBO + AZA (95% ÎI, 4,1-11,3)  
(RH, 0,42; [95% ÎI, 0,27-0,65];  $P<0,0001$ )<sup>4,5</sup>

**REMISIE COMPLETĂ  
DURABILĂ**

Pacienți care obțin RC  
**47%**  
(95% ÎI, 35-59) vs 15% cu  
PBO + AZA (95% ÎI, 8-25) ( $P<0,001$ )<sup>4</sup>



Pacienții încă în RC la 12 luni  
**88%**  
(95% ÎI, 67,5-96,2)  
vs 36% cu PBO + AZA (95% ÎI, 5,3-70,6)<sup>4,6</sup>

**ducând la creșterea rapidă a numărului de neutrofile și  
scăderea numărului de blaști din măduva osoasă<sup>4,7</sup>**

AZA, azacitidină; ÎI: interval de încredere; RC: remisie completă; RH: rata de hazard; IC: chimioterapie de inducție; mIDH1, mutație isocitrat dehidrogenază-1; PBO: placebo.  
1. TIBSOVO® rezumatul caracteristicilor produsului 2023; 2. TIBSOVO®. NCCN Clinical Practice Guidelines in Oncology (NCCN Guidelines®) for Acute Myeloid Leukemia V.3.2023.; 3. Döhner H et al. *Blood*. 2022;140(12):1345-1377. 4. Montesinos P et al. *N Engl J Med*. 2022;386:1519-1531. 5. De Botton S et al. Presented at ASCO 2023 Meeting (#P142). 6. Servier. Data on file. 7. Döhner H et al. Presented at ASCO 2022 Meeting (#P273).

Medicament eliberat pe bază de prescripție medicală restrictivă PR. Pentru informații complete, vă rugăm să consultați Rezumatul Caracteristicilor Produsului Tibsovo, prin scanarea codului QR.  
Acest material promoțional este destinat profesioniștilor din domeniul sănătății.



Servier Pharma S.R.L.  
S-Park, corp A1, str. Tipografilor nr. 11-15, etaj 3, sector 1, București  
Telefon: 021-528 52 80, Fax: 021-528 52 81, www.servier.ro

**SERVIER**  
moved by you



The 31<sup>th</sup>  
National Conference of the  
**Romanian Society  
of Hematology**

[www.srh-events.ro](http://www.srh-events.ro)

**October 1-5, 2025**  
Palace of the Parliament  
**Bucharest**

Saturday, October 4<sup>th</sup> | Palace of the Parliament – Nicolae Balcescu Hall

## COMPANY SYMPOSIA SESSION XI

Chairpersons: Nicoleta Berbec, Iulia Ursuleac

16:15

### **Novartis Symposium**

16:45

Risk assessment in polycythemia vera beyond age and thrombotic history

Florian Heidel

16:45

### **Novartis Symposium**

17:15

LMC: A quarter century of TKI in Romania: What's New in Leukemia Treatment?

Ioana Ioniță

17:15

### **Angelini Symposium**

17:30

Efficacy and Safety of Ponatinib in Patients with CML

Mihaela Andreescu

17:30

### **AOP Symposium**

17:55

BESREMi versus Hydroxyurea: The Race for Long-Term Control in Polycythemia Vera - Debate

*Moderator: Daniel Coriu*

*Speakers: Nicoleta Mariana Berbec, Mihaela Cornelia Lăzăroiu*



The 31<sup>th</sup>  
National Conference of the  
**Romanian Society  
of Hematology**

[www.srh-events.ro](http://www.srh-events.ro)

October 1-5, 2025  
Palace of the Parliament  
Bucharest



Saturday, October 4<sup>th</sup> | Palace of the Parliament - Human Rights Hall

## EDUCATIONAL SESSION I

Chairpersons: Alina Mirella Dobrota, Monica Dutescu

08:30 **Optim stock blood components in UTS - desired versus reality**  
08:45 Georgeta Hanganu, Beatrice Dragomir, Mihaela Catană, Daniela Gheorghe, Anca Sbarcea, Adriana Craciun

08:45 **Liberation from quarantine: let's get into the criticality of the activity, beyond words**  
09:15 Alina Mirella Dobrota

09:15 **Forum UTS: Questions that have not yet been asked. Answers, which have not yet been given...**  
10:00 Alina Mirella Dobrota

10:00 **Roche Symposium: Neighboring example of automation and digitalization of laboratory testing, not only for blood donor screening**  
10:45 Milos Bohonek

10:45 *Coffee Break*  
11:00

Saturday, October 4<sup>th</sup> | Palace of the Parliament - Human Rights Hall

## EDUCATIONAL SESSION II

Chairpersons: Alina Mirella Dobrota, Monica Dutescu

11:00 **Validation of standard operating procedures - routine or insurmountable difficulty?**

11:15 Georgeta Hanganu, Beatrice Dragomir, Mihaela Catana, Daniela Gheorghe, Anca Sbarcea

11:15 **The importance of the concept - materiovigilance in blood transfusion centers**

11:30 Georgeta Hanganu, Beatrice Dragomir, Mihaela Catana, Daniela Gheorghe, Anca Sbarcea

**Quality control of erythrocyte components: hemolysis**

11:30 Georgeta Hanganu, Monica Chiran, Adriana Crăciun, Beatrice Dragomir, Mihaela Catană, Daniela Gheorghe,  
11:45 Anca Sbarcea

**Validation of laboratory methods: validation of the method of determining the blood count**

11:45 Georgeta Hanganu, Beatrice Dragomir, Mihaela Catana, Daniela Gheorghe, Anca Sbarcea  
12:00

**BioRad Symposium: Irregular antibodies identification with IH-AbID software from Bio-Rad**

12:00 Katarzyna Malesa  
12:25

**Chronos Symposium: Harnessing Plasma Using Existing Transfusion Center Infrastructure - Automation and Legislative Challenges**

12:25 Răzvan Mihai Călin  
12:50

**Discussions on the presented papers**

12:50

13:00

13:00

14:00

*Lunch Break*

The 31<sup>th</sup>  
National Conference of the  
**Romanian Society  
of Hematology**

[www.srh-events.ro](http://www.srh-events.ro)

October 1-5, 2025  
Palace of the Parliament  
Bucharest



Saturday, October 4<sup>th</sup> | Palace of the Parliament - Human Rights Hall

## **SESSION: BIOLOGICAL CONTROL III**

Chairpersons: Maria Daniela Voicu, Laura Eugenia Păcurariu

14:00 **Challenges in laboratory diagnosis of alloimmunization in pregnancy**  
14:15 Laura Eugenia Păcurariu, Lavinia Anca Horvath, Andreea Gabriela Ionescu, Carmen Călugăroiu

14:15 **Transfusion safety and security**  
14:30 Dalia Cristina Horvat, Larisa David, Cristina Bichiș, Ramona Bornemiza

14:30 **Correlation of donor characteristics with factor V and factor VIII levels**  
14:45 Paula Badea, Luminița Rusen

14:45 **Sensitivity of coagulation factors V and VIII in plasma components**  
15:00 Luminița Rusen, Paula Badea



Saturday, October 4<sup>th</sup> | Palace of the Parliament - Human Rights Hall

## **SESSION: CLINICAL TRANSFUSION I**

Chairpersons: Maria Daniela Voicu, Laura Eugenia Păcurariu

15:00 **Blood transfusion unit in the private sector, from project to implementation and development**  
15:15 S.I. Mociu, N. Ciufu, A. Mociu, M. Vlad, Andreea Zelca

15:15 **Transfusion therapy in hematological diseases: thresholds, chemotherapy and associated toxicities**  
15:30 Caesar Tudor, Alina Mirella Dobrota

15:30 **Patient blood management (PBM)**  
15:45 Maria Daniela Voicu, Larisa Diana Nitu, Cristina Ioana Mitru, Iulia Constantinescu

15:45 **Discussions on the papers presented**  
16:00

16:00 *Coffee Break*  
16:15

The 31<sup>th</sup>  
National Conference of the  
**Romanian Society  
of Hematology**

[www.srh-events.ro](http://www.srh-events.ro)

October 1-5, 2025  
Palace of the Parliament  
Bucharest



Saturday, October 4<sup>th</sup> | Palace of the Parliament - Human Rights Hall

## SESSION CLINICAL TRANSFUSION II

Chairpersons: Maria Daniela Voicu, Laura Eugenia Păcurariu

16:15 **The role of multidisciplinary teams in the management of transfusion patients: an integrated approach to transfusion safety**

16:30 Maria Daniela Voicu, Larisa Diana Nitu, Cristina Ioana Mitru, Iulia Constantinescu

16:30 **Selection of compatible platelet concentrates in a patient with acute myeloid leukemia - case presentation**

16:45 Ruxandra Caisan, Lorena Ulea, Ana Moise, Ioana Gingu, Geanina Ofiteru, Monica Dutescu

16:45 **Renal damage in thalassemia: mechanisms, clinical manifestations and therapeutic perspectives**

17:00 Maria Daniela Voicu, Cristina Ioana Mitru, Larisa Diana Nitu, Iulia Constantinescu

17:00 **The role of the national transfusion network in the management of hematopoietic stem cell donors - achievements and perspectives**

17:15 Monica Dutescu, Ruxandra Caisan, Lorena Ulea, Ana Moise, Ioana Gingu, Laurian Arghisan

17:15 **Fecal microbiota transplantation**

17:30 Georgeta Hanganu, Beatrice Dragomir, Mihaela Catana, Daniela Gheorghe, Anca Sbarcea

17:30 **Discussions on the papers presented**

17:45

17:45 **Conclusion of the Conference**

18:00

18:00 **Future plans of the National Society of Blood Transfusion - proposals**

18:15 **Feedback from society members**

**SAVE  
THE DATE!**

**SRH 2026**  
**OCTOBER 7-11, 2026**  
**SINAIA, ROMANIA**

**The 31<sup>th</sup>**  
National Conference of the  
**Romanian Society**  
**of Hematology**

[www.srh-events.ro](http://www.srh-events.ro)

**October 1-5, 2025**

Palace of the Parliament  
**Bucharest**

**ORGANIZER:** SRH 

*in partnership with*

 **Balkan Myeloma Study Group**

## **EVENT MANAGEMENT SRH 2025**

 **EVENTER**

Phone: 0040-332.40.88.05

Email: [contact@srh-events.ro](mailto:contact@srh-events.ro)

Web: [www.eventernet.ro](http://www.eventernet.ro)